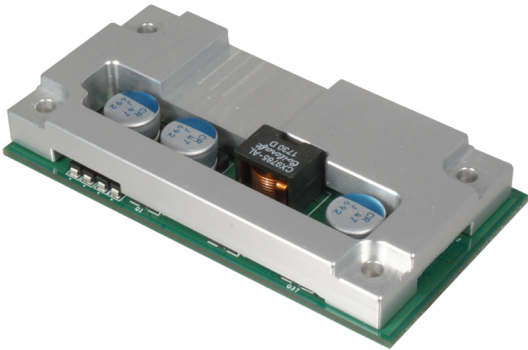
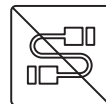
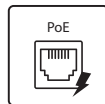


CFM-PoE06

CFM Module with PoE Control Function for DI series, Individual Port 25.5W



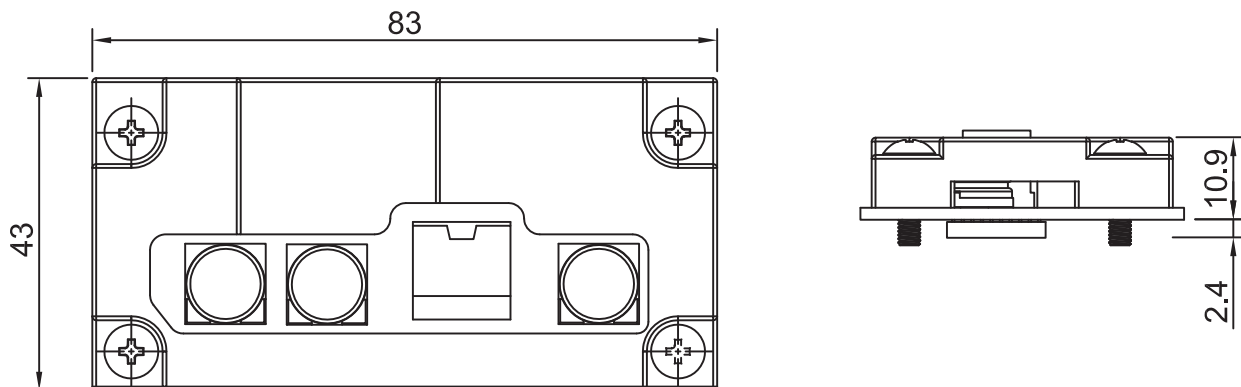
- CFM (Control Function Module) Technology
- Enable Power Over Ethernet Plus Function for CMI Module
- IEEE 802.3at Compliant
- Individual Port Support Up to 25.5W



Specifications

Interface	CFM (Control Function Module) Interface
Function	4x Power over Ethernet Plus Ports (PoE+)
Power over Ethernet Standard	IEEE 802.3at Compliant
Power Output	Individual port 25.5W
Power Boost	50 ~ 57V
Dimension (W x D x H)	83 x 43 x 10.9 mm (With Heatsink)

Dimensions



Unit: mm

Ordering Information

Available Models

CFM-PoE06-R10 CFM Module with PoE Control Function for DI series, Individual Port 25.5W

Package Check List

- Control Function Module x1
- PoE Heatsink x1
- PoE Thermal Pad Pack x1
- Screw Pack x1

Compatible List

Model No.	CFM-PoE06
DI-1000-i3	V
DI-1000-i5	V
DI-1000-i7	V