

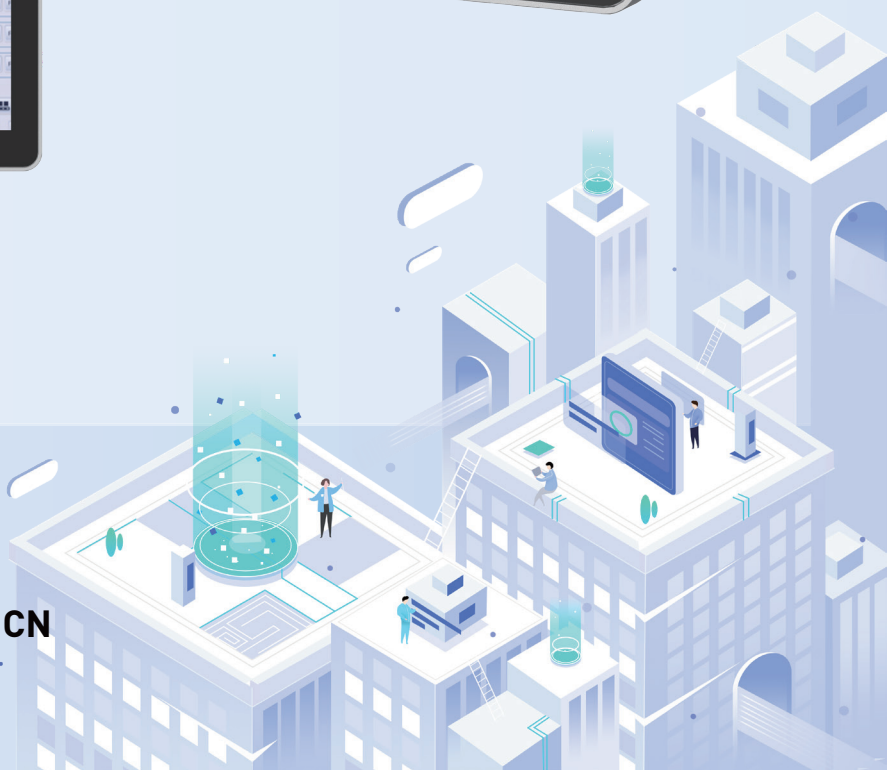
AFL4-W13-ADL

IEI 轻工业平板电脑

搭载第十二代英特尔® Alder Lake-P 平台



IEI 威强电工业电脑
IEI Integration Corp.
WWW.IEIWORLD.COM.CN



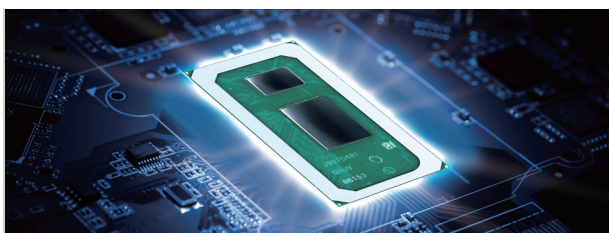
AFL4-W13-ADL

搭载英特尔®第十二代 Alder Lake-P 板载处理器, 8GB 板载内存, 2 x 2.5GbE 高速网口, 2 x M.2 M key 扩展插槽, 支持 WiFi6E和蓝牙5.2, 具有防眩光与抗紫外的10点电容式触控屏。



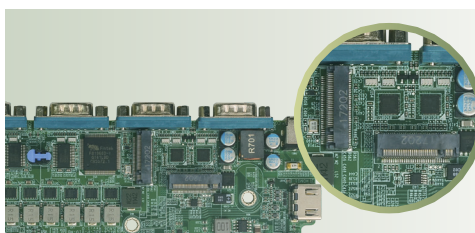
英特尔®第十二代CPU

搭载英特尔®第十二代 Alder Lake-P处理器, 颠覆性的混合架构, 更小机身, 更高性能



全速M.2 扩展

两个M.2 M key 支持2242及2280规格, PCIe Gen4 x 4 全速信号, 更大带宽, 更快速度



防眩光与抗紫外的电容触控屏

让你在户外或强光下不受反射影响, 画面清晰可见, 户外长时间使用不异变, 支持10点触控



支持手套和湿手操作

全新的电容触控屏, 让你在戴手套时依然顺畅操作, 屏上有水或湿手时也可精准点击



丰富的I/O接口

具有4串5U的丰富配置, 其中两个RS232 ,两个RS-232/422/485, 4个USB 3.2, 一个USB 2.0, 轻松应对各种应用场景

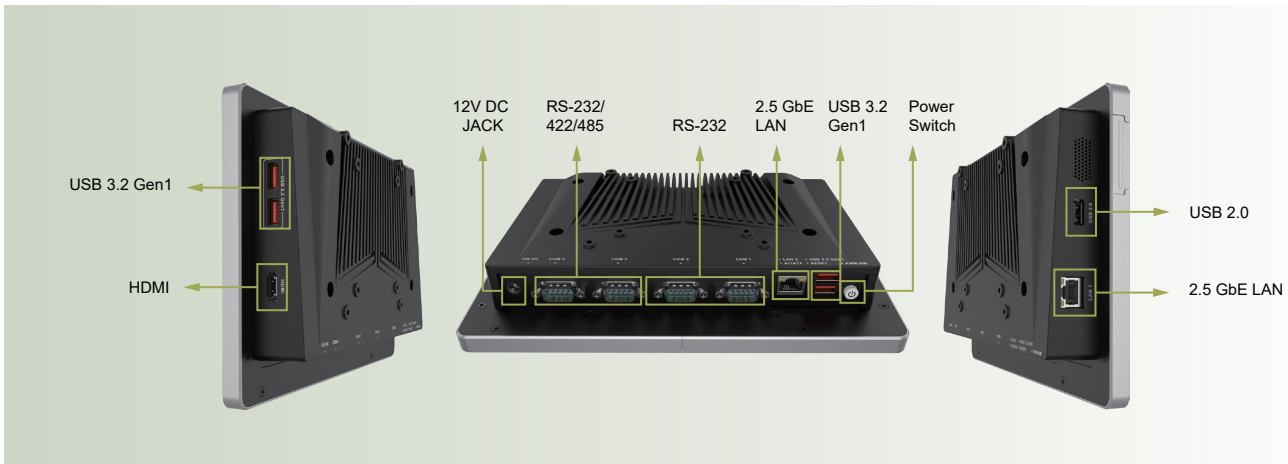


支持WiFi6E和蓝牙5.2

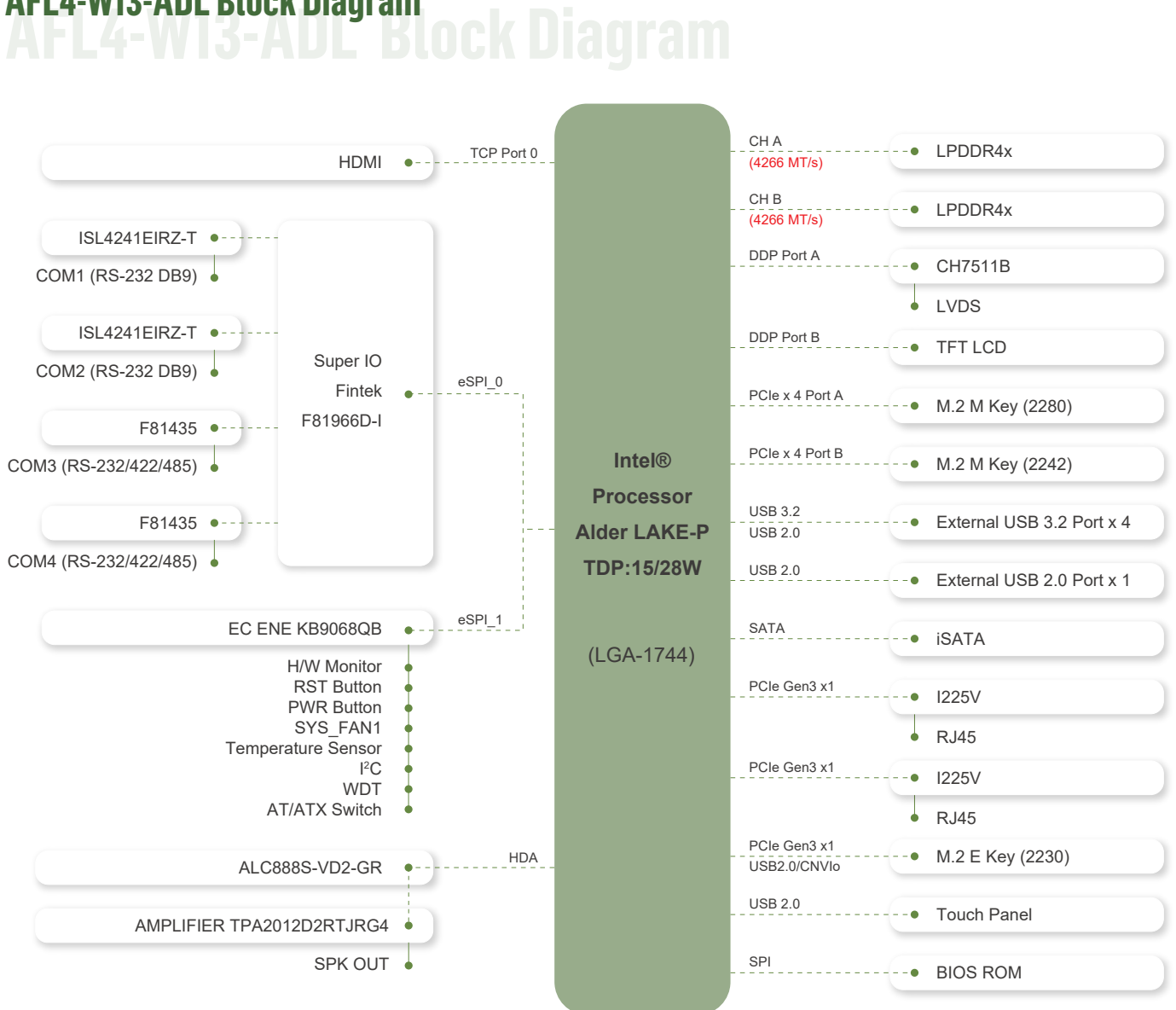
更强的WiFi6E网络, 同时支持2.4GHz/5GHz及6GHz, 更大带宽, 更低时延, 蓝牙5.2连接更稳定, 功耗更低



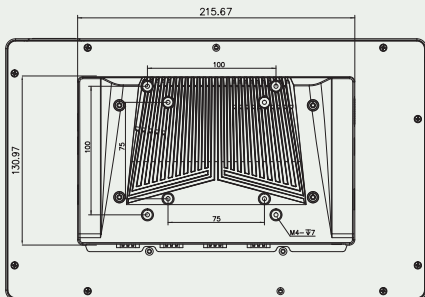
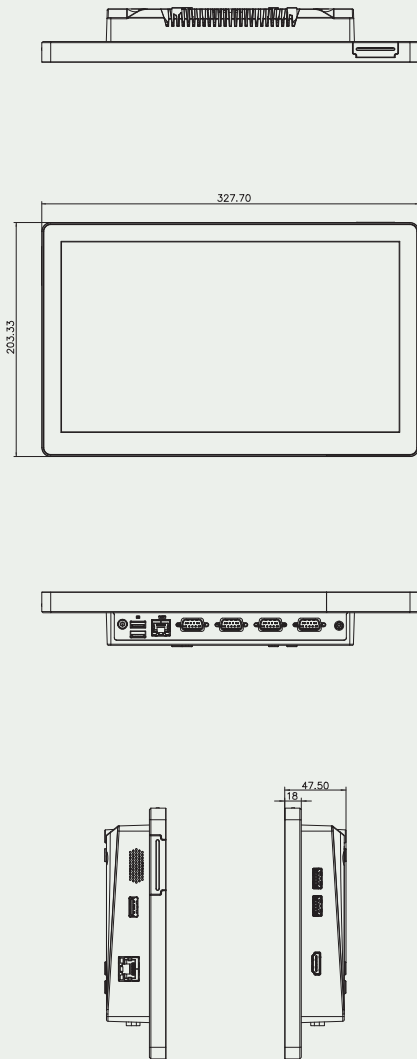
AFL4-W13-ADL IO布局



AFL4-W13-ADL Block Diagram



尺寸 Dimensions



规格 Specifications

Model		AFL4-W13-ADL	
LCD	Size	13.3"	
	Resolution	1920 x1080 (16:10)	
	Brightness (cd/m ²)	400	
	Contrast Ratio	800:1	
	Viewing Angle (H-V)	170°/170°	
	Backlight MTBF	50000 hours	
Touch	Touch Screen	PCAP with USB interface (anti-UV/AR coating)	
	Touch Controller	EETI EXC 81 Series	
Mainboard	SOC	12th Generation Intel® Alder Lake-P Core™ i7/i5/i3/Celeron® Processor	
	RAM	Dual channel On board LPDDR4X 8G	
	Ethernet	LAN1: Intel® I225 + LAN2: Intel® I225	
	Audio Codec	Realtek ALC888S	
Storage	M.2	1 x M.2 M key 2242 (PCIe Gen4 x 4) 1 x M.2 M key 2280 (PCIe Gen4 x 4)	
	COM Port	2 x RS-232 by DB9 2 x RS-422/RS485 by DB9	
I/O Ports & Switch	LAN Port	2 x 2.5GbE LAN	
	USB Port	2 x USB 3.2 Gen1 3 x USB 2.0	
	Display Port	1 x HDMI output	
	Power in	1 x 12V DC Jack	
	Switch		1 x Power button 1 x Reset button 1 x Clear CMOS button 1 x AT/ATX switch
		Audio	AMP 1.2W (internal speaker)
		Wireless & Bluetooth	IEEE 802.11 a/b/g/n/ax, Bluetooth V5.2 1 x M.2 2230 A Key Slot (PCIe + USB signal)
Physical	Construction Front Panel	SECC	
	Mounting	Wall, Rack, Stand, ARM, VESA 75mm x 75mm	
	Color	Silver + Black	
Environment	Operating Temperature (°C) (Ambient with air flow)	-20 ~ 50	
	Storage Temperature (°C)	-20 ~ 60	
	Humidity	10% to 95% (non-condensing)	
	IP Level	Front panel IP65	
	Safety&EMC	CE/EMC, FCC, RED (Class A)	
	Thermal Solution	Fanless	
Power	Power Requirement	12V	
	ErP	ErP 2009/125/EC	

包装清单 Packing List

1 x Power Cord	1 x Power Adapter
1 x QIG	

订购信息 Ordering Information

AFL4-W13-ADL-P-i7/ W/8G-R10	13.3" 400cd/m ² 1920x1080 Fanless Panel PC with 12th Generation Intel® Core™ i7 on-board Processor, TDP 15W, 8GB LPDDR4 on-board, without WiFi&Bluetooth module, PCAP touch, 12V DC, R10
AFL4-W13-ADL-P-i5/ W/8G-R10	13.3" 400cd/m ² 1920x1080 Fanless Panel PC with 12th Generation Intel® Core™ i5 on-board Processor, TDP 15W, 8GB LPDDR4 on-board, without WiFi&Bluetooth module, PCAP touch, 12V DC, R10
AFL4-W13-ADL-P-i3/ W/8G-R10	13.3" 400cd/m ² 1920x1080 Fanless Panel PC with 12th Generation Intel® Core™ i3 on-board Processor, TDP 15W, 8GB LPDDR4 on-board, without WiFi&Bluetooth module, PCAP touch, 12V DC, R10
AFL4-W13-ADL-P-CE/ W/8G-R10	13.3" 400cd/m ² 1920x1080 Fanless Panel PC with 12th Generation Intel® Celeron® G on-board Processor, TDP 15W, 8GB LPDDR4 on-board, without WiFi&Bluetooth module, PCAP touch, 12V DC, R10

可选配件 Options

料号	描述
-	TBD
-	TBD
-	TBD
-	TBD
-	TBD