

Figure 3-23: Secure the Mounting Clamp Holders

Step 4: Slide the monitor through the hole until the aluminum frame is flush against the panel (Figure 3-24).

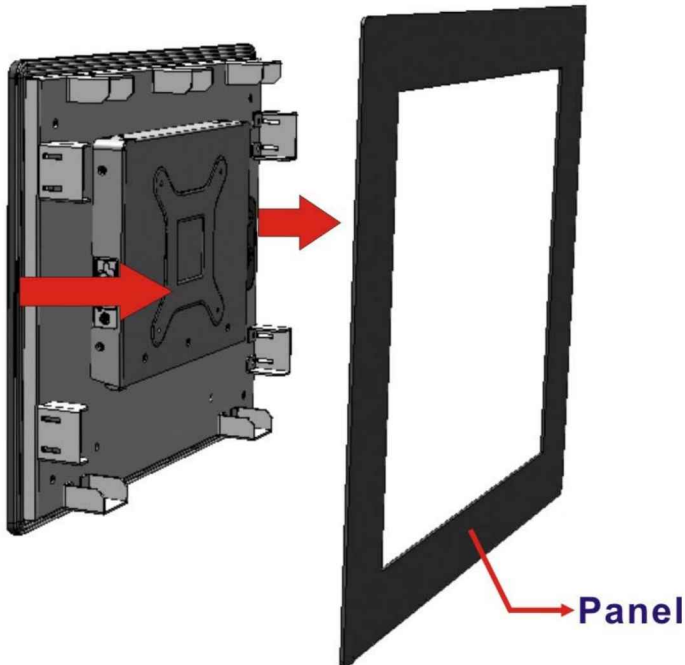


Figure 3-24: Slide into the Panel

DM-F Series Monitor

Step 5: Insert the panel mounting clamps into the pre-formed holes of the clamp holders (Figure 3-25).

Step 6: Tighten the screws that pass through the panel mounting clamps until the plastic caps at the front of all the screws are firmly secured to the panel (Figure 3-25).

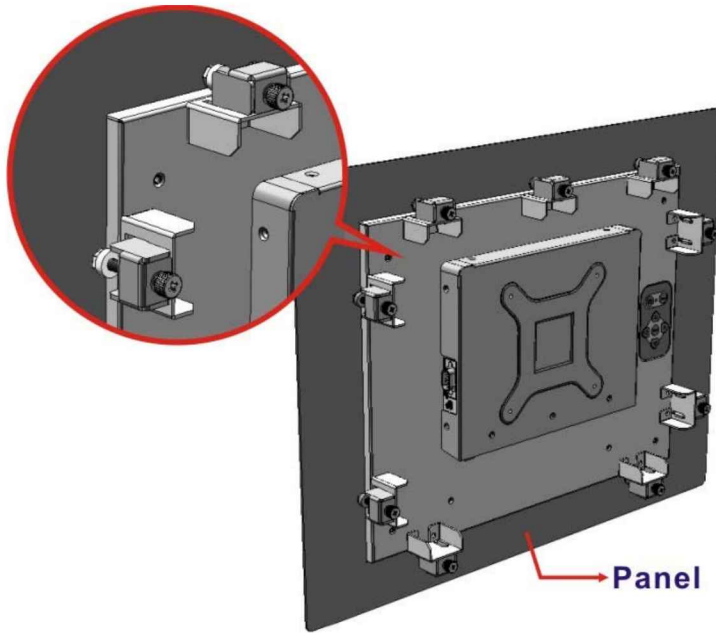


Figure 3-25: Panel Mounting Clamp Installation

The dimensions of the clamp holder and the clamp are shown in the following diagrams.

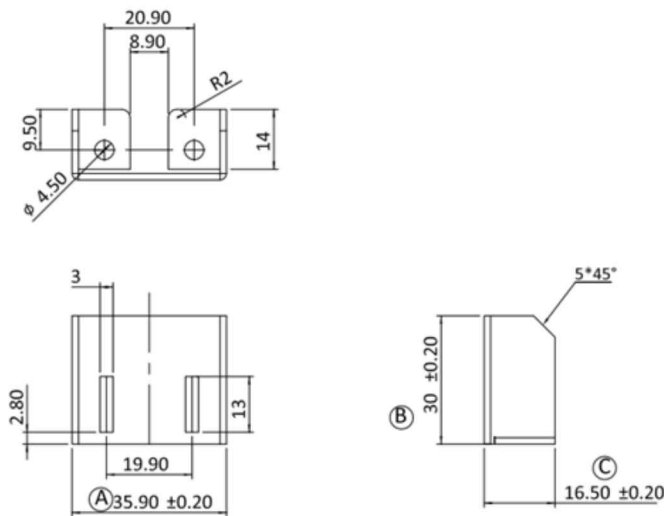


Figure 3-26: Mounting Clamps Holder Dimensions

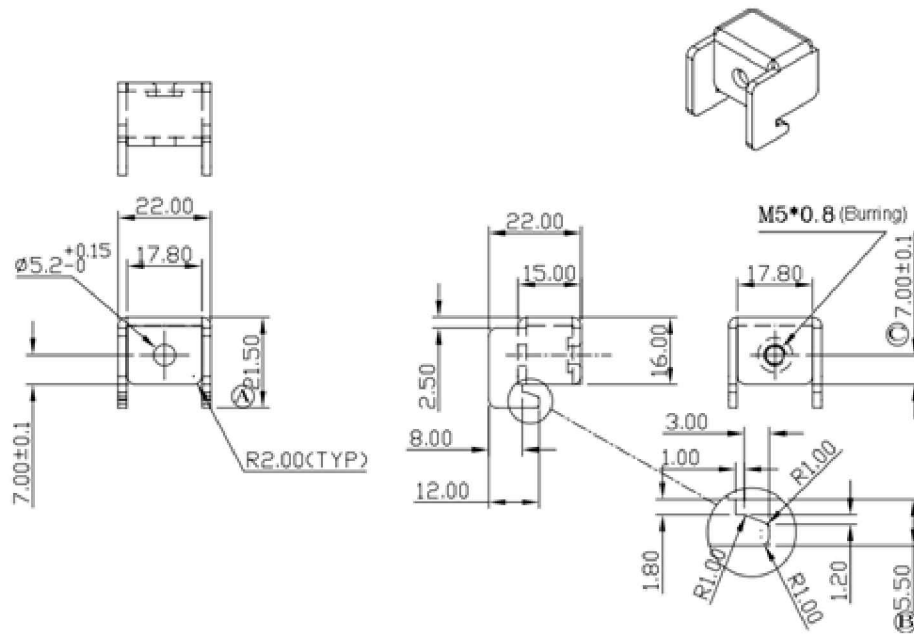


Figure 3-27: Ultra Set Plate Dimensions

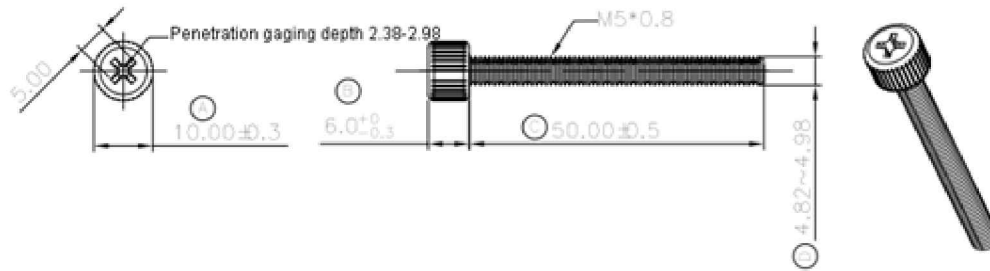


Figure 3-28: Bolt Dimensions

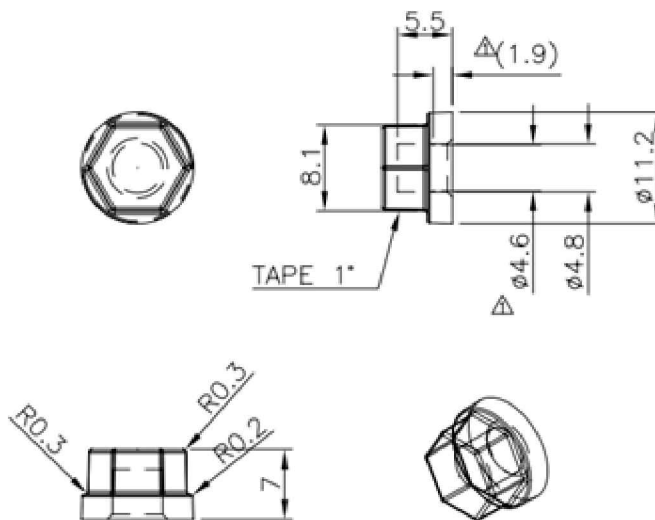


Figure 3-29: Steering Button Dimensions