



Features

- PXA270, 520 MHz CPU
- Windows CE 5.0
- InduSoft Web Studio v6.1
- Hard Real-Time Capability
- 3 I/O Slots
- IP65 Compliant Front Panel
- 3.5"/5.7"/10.4" TFT LCD
- Audio with Microphone-In and Earphone-Out
- Operating Temperature: -20 ~ +70°C

ViewPAC

3

2

Introduction

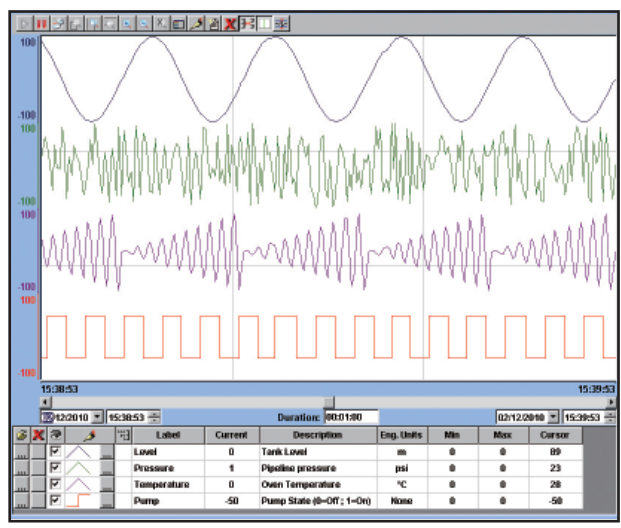
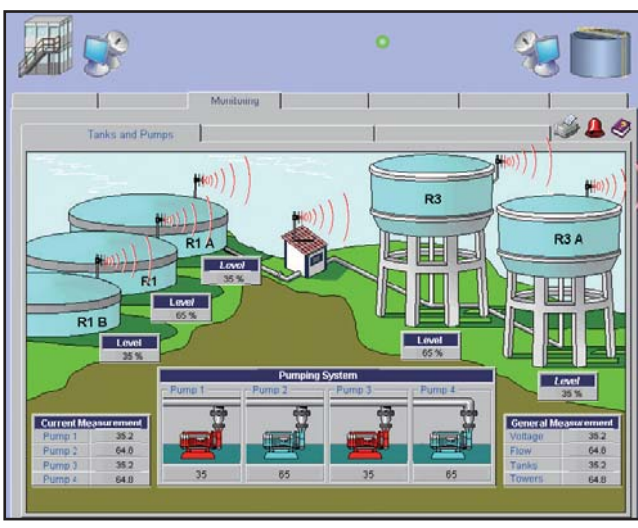
VP-23W9/25W9/4139 are InduSoft based PACs which integrate a color graphic display and I/O expansion slots into a single unit. It is equipped with a PXA270 CPU (520 MHz), a variety of connectivity options (USB, Ethernet, RS-232/485), three I/O slots, a 3.5"/5.7"/10.4" TFT LCD and a rubber keypad. The benefits of running Windows CE 5.0 on VP-23W9/25W9/4139 include hard real-time capability, small core size, fast boot speed, interrupt handling at a deeper level and achievable deterministic control. VP-23W9/25W9/4139 is also capable of running InduSoft and PC-based control software such as Visual Basic .NET, Visual C#.

InduSoft Features



InduSoft Web Studio is a powerful, integrated collection of automation tools that includes all the building blocks needed to develop modern Human Machine Interfaces (HMI), Supervisory Control and Data Acquisition (SCADA) systems, and ViewPAC applications. InduSoft Web Studio's application runs in native Windows NT, 2000, XP, CE and CE .NET environments and conforms to industry standards such as Microsoft .NET, OPC, DDE, ODBC, XML, and ActiveX.

- Elegant Graphics
- Online and History Alarm / Event / Trend
- ActiveX (GSM / SHM / COM /WEB provided by ICP DAS)
- Multi-Language
- Remote Web Client Control & Security
- System Redundancy
- Database (Access, Excel, SQL, Oracle...)
- Various Communication Driver (DCON, Modbus, OPC, DDE, TCP/IP...)
- Online Configuration and debugging
- Recipes and Reports
- Others (VBScript, E-mail, FTP, SNMP...)



Specifications

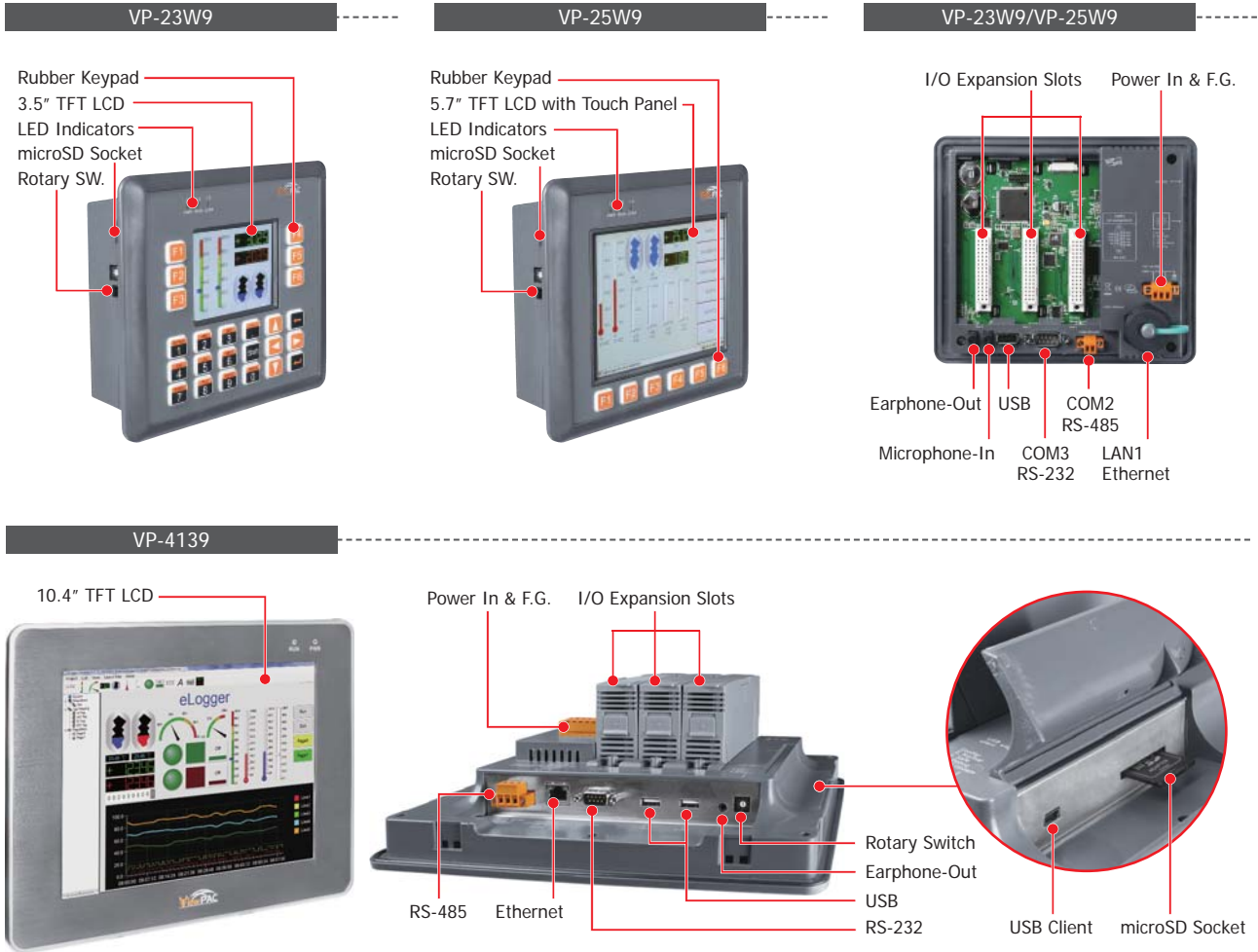
Models	VP-23W9	VP-25W9	VP-4139
System Software			
OS	Windows CE 5.0		
.Net Compact Framework	3.5		
Embedded Service	FTP server, Web server (supports VB script, JAVA script), Embedded SQL server		
SDK Provided	DII for eVC, DII for Visual Studio.Net 2005/2008		
Multilanguage Support	English, German, French, Spanish, Russian, Italian, Korean, Simplified Chinese, Traditional Chinese		
Development Software			
InduSoft Software	InduSoft Web Studio v6.1 Service Pack 6		
Others	Options: Microsoft EVC++4.0 or VS .NET 2005/2008 (VB .NET 2005/2008, C# .NET 2005/2008)		
Web Service			
Web HMI	Support Web HMI function, PC running Internet Explorer can access to the VP-2XW9 via Local Ethernet or Internet or dial Modem, monitoring and control.		
Security	Web HMI supports three levels user name and password protection		
CPU Module			
CPU	PXA270, 520 MHz		
SDRAM	128 MB		
Dual Battery Backup SRAM	512 KB; data valid up to 5 years		
Flash	96 MB		128 MB
EEPROM	16 KB		
Expansion Flash Memory	microSD socket with one 4 GB microSD card (support up to 32 GB microSDHC card)		
RTC (Real Time Clock)	Provide second, minute, hour, date, day of week, month, year		
64-bit Hardware Serial Number	Yes, for Software Copy Protection		
Dual Watchdog Timers	Yes (0.8 second)		
Rotary Switch	Yes (0 ~ 9)		
VGA & Communication Ports			
Ethernet	RJ-45 x 1, 10/100 Base-TX (Auto-negotiating, Auto MDI/MDI-X, LED indicators)		
USB 1.1 (host)	1		
USB 1.1 (client)	-		1
COM 0	Internal communication with the high profile I-87K series modules in slots		
COM 1	-		
COM 2	RS-485 (Data+, Data-) with internal self-tuner ASIC; 2500 Vdc isolated		
COM 3	RS-232 (Rx/D, Tx/D, CTS, RTS, DSR, DTR, CD, RI and GND); Non-isolated		
MMI (Man Machine Interface)			
LCD	3.5" TFT (Resolution 320 x 240)	5.7" TFT (Resolution 640 x 480)	10.4" TFT (Resolution 800 x 600)
Touch Panel	-	Yes	
Rubber Keypad	24 keys	6 Keys	-
Audio	Microphone-In and Earphone-Out		Earphone-Out
LED Indicators	3 Dual-Color LEDs (PWR, RUN, LAN1, L1, L2, L3; L1 ~ L3 for User Programmable)		2 LEDs (PWR, RUN)
I/O Expansion Slots			
Slot Number	3		
	Note: For High Profile I-8K and I-87K Modules Only		
Mechanical			
Dimensions (W x H x D)	182 mm x 158 mm x 125 mm		293 mm x 231 mm x 129 mm
Installation	Panel Mounting		
Ingress Protection	Front panel: IP65		
Environmental			
Operating Temperature	-20 ~ +70°C		
Storage Temperature	-30 ~ +80°C		
Ambient Relative Humidity	10 ~ 90% RH (non-condensing)		
Power			
Input Range	+10 ~ +30 Vdc		
Isolation	1 kV		
Capacity	12.5 W		
Consumption	7.2 W		8.5 W

3

2

ViewPAC

Appearance



3

2

ViewPAC

Ordering Information

VP-23W9-EN CR	InduSoft based ViewPAC with 3.5" LCD and 3 I/O slots (Multilanguage Version of OS) (RoHS)
VP-25W9-EN CR	InduSoft based ViewPAC with 5.7" LCD and 3 I/O slots (Multilanguage Version of OS) (RoHS)
VP-23W9-TC CR	InduSoft based ViewPAC with 3.5" LCD and 3 I/O slots (Traditional Chinese of OS) (RoHS)
VP-25W9-TC CR	InduSoft based ViewPAC with 5.7" LCD and 3 I/O slots (Traditional Chinese of OS) (RoHS)
VP-23W9-SC CR	InduSoft based ViewPAC with 3.5" LCD and 3 I/O slots (Simplified Chinese of OS) (RoHS)
VP-25W9-SC CR	InduSoft based ViewPAC with 5.7" LCD and 3 I/O slots (Simplified Chinese of OS) (RoHS)
VP-4139-EN CR	InduSoft based ViewPAC with 10.4" LCD and 3 I/O slots (Multilanguage Version of OS) (RoHS)
VP-4139-TC CR	InduSoft based ViewPAC with 10.4" LCD and 3 I/O slots (Traditional Chinese of OS) (RoHS)
VP-4139-SC CR	InduSoft based ViewPAC with 10.4" LCD and 3 I/O slots (Simplified Chinese of OS) (RoHS)

Note: The default runtime license (CEView Lite Plus - 300 tags and 3 driver) is installed.

Accessories

InduSoft Development Software	
InduSoft-NT512000D	Advanced Server for Windows NT/2000/XP (512,000 Tags, unlimited drivers)
InduSoft-NT64000D	Control Room for Windows NT/2000/XP (64,000 Tags, 8 drivers)
InduSoft-NT4000D	Operator Workstation for Windows NT/2000/XP (4,000 Tags, 5 drivers)
InduSoft-NT1500D	Local Interface for Windows NT/2000/XP (1500 Tags, 3 drivers)
InduSoft-NT300D	NTView PRO for Windows NT/2000/XP (300 Tags, 3 drivers)
InduSoft Development Software	
InduSoft-CE1500R	CEView standard for Windows CE Run-time (CE View)(1500 Tags, 3 drivers)
InduSoft-CE300R	CEView Lite Plus for Windows CE Run-time (300 Tags, 3 drivers)
Power Supply	
DP-660	24 Vdc/2.5 A, 60 W and 5 Vdc/0.5 A, 2.5 W Power Supply with DIN-Rail Mounting
MDR-60-24 CR	24 Vdc/2.5 A, 60 W Power Supply with DIN-Rail Mounting (RoHS)