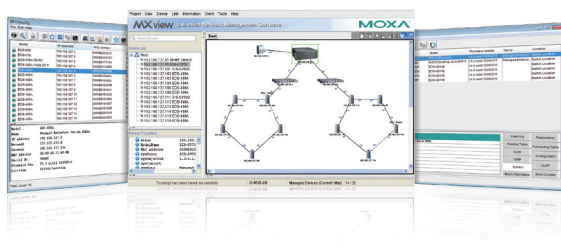


MXstudio

Industrial network management suite for installation, operation, maintenance, and diagnostics



- An all-in-one toolset for installation, operation, maintenance, and diagnostics stages of the network lifecycle
- MXconfig, MXview, and N-Snap for easy and quick industrial network management
- MXview ToGo mobile app for remote monitoring—anytime, anywhere
- Maximized productivity with Moxa industrial Ethernet solutions

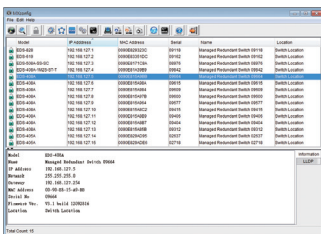
Introduction

Moxa's MXstudio industrial network management suite combines all the tools you need throughout the network lifecycle into one toolbox, including MXview industrial management software, MXconfig industrial network configuration tool, and N-Snap industrial network snapshot tool. Whether it is for configuration, monitoring,

maintenance, or troubleshooting, the all-in-one MXstudio software suite has a tool for every task. In addition, MXstudio's three key benefits, easy configuration, smart visualization, and quick troubleshooting, are designed to meet the demands of industrial automation networks.

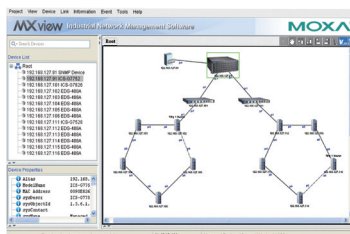
MXstudio's Offerings

MXconfig Industrial Network Configuration Tool



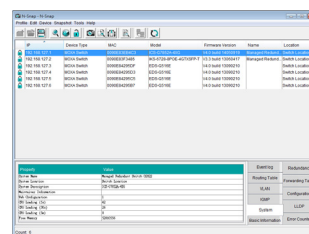
- Mass configuration function to reduce setup time
- Topology analysis to eliminate manual setting errors
- Configuration overview for efficient management

MXview Industrial Network Management Software



- Auto discovery of network devices and physical connections
- Event playback for quick troubleshooting
- Color-coded VLAN/IGMP groups and other visualized network data
- Supports MXview ToGo mobile app for remote monitoring and notification—anytime, anywhere

N-Snap Industrial Network Snapshot Tool



- A standalone data collection tool to take network snapshots for quick troubleshooting
- Compare network and device data, and highlight the differences

System Requirements

CPU	2 GHz or faster dual core CPU
RAM	2 GB
Hard Disk Space	10 GB
OS	Windows XP Professional, Windows 7 (32/64-bit), Windows 8 (32/64-bit), Windows Server 2008 (32/64-bit), Windows Server 2012 (32/64-bit)

Ordering Information

A free version is now available for download at Moxa's website.

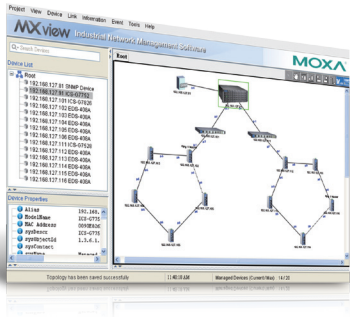
Supported Devices

Detailed model names are available in each product datasheet. Or check Moxa's website for the most up-to-date information.

MXview



Industrial network management software designed for converged automation networks



- Event Playback records network events, and replays past network incidents
- Discovers and visualizes network devices and physical connections automatically
- Central management of configurations and firmware for Moxa devices
- Flexible events and notifications with self-defined threshold and duration
- Supports third-party devices with MIB compiler and MIB browser
- Comprehensive reports, including inventory, traffic, and availability reports
- Generates OPC 2.0 compliant tags automatically to integrate with SCADA/HMI applications
- Provides a virtual demonstration network that lets you experience the software without connecting any devices
- Supports MXview ToGo mobile app for remote monitoring and notification—anytime, anywhere

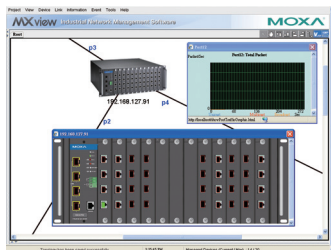
Introduction

Moxa's MXview network management software is designed for configuring, monitoring, and diagnosing networking devices in industrial networks. MXview provides an integrated management platform that can discover networking devices and SNMP/IP devices

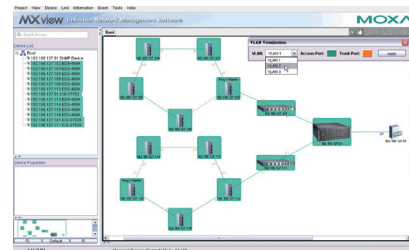
installed on subnets. All selected network components can be managed graphically via web browser from both local and remote sites—anytime and anywhere.

Visualization

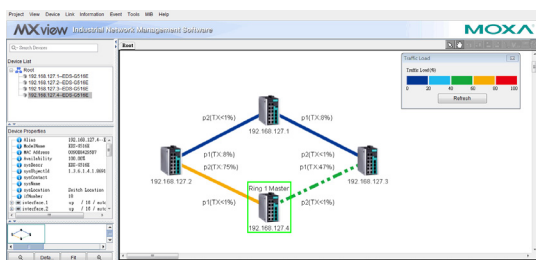
- Discovers up to 2,000 Moxa devices and SNMP/ICMP devices within scan range
- Visualization of redundant link status and device roles of network redundancy protocols
- Visualization of graphic VLAN groups and IGMP snooping roles
- Visualization of network traffic loading with color-coded links
- Device front panel visualization, including ports and LED indicators
- Visualization of managed PoE device power consumption
- Displays third-party device icons



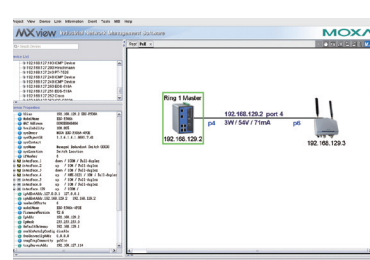
Virtual Device Panel



VLAN Visualization



Traffic Load Visualization



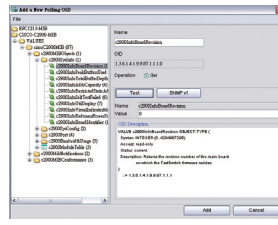
PoE Visualization

Network Diagnostics and Event Notification

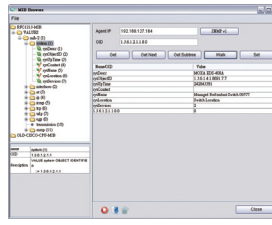
- Detect problems in real-time with SNMP trap/inform, or periodic polling
- Generate trend graphs to track bandwidth utilization and error packet rate statistics, accurate to four decimal points
- Event Playback records network events, and replays past network incidents
- Flexible events and notifications with self-defined threshold and duration
- Supports Syslog server for centralized message management
- Configurable event notification alarms sent through SMS, email, and SNMP trap, or locally through program notification, message box, and audio alerts
- Generates OPC 2.0 compliant tags automatically to integrate with SCADA/HMI applications
- Group health OPC tag represents entire network status
- Real-time device availability monitoring
- Supports third-party devices with MIB compiler and MIB browser
- Collaborates with third-party NMS through SNMP traps
- Supports MXview ToGo mobile app for remote monitoring and notification—anytime, anywhere



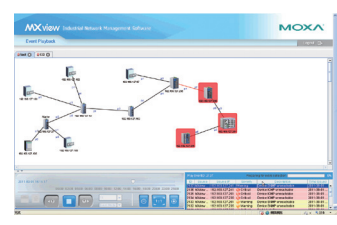
Traffic Monitoring



MIB Compiler



MIB Browser



Event Playback

Comprehensive Reports

- Maintains device availability reports and records for up to 90 days
- Generates an inventory report for each device in the network
- Compiles comprehensive device properties report
- Generates network traffic trend reports

Availability and Inventory Report

Centralized Configuration and Firmware Management

- Bulk deployment of device configurations and firmware
- In one click, back up the entire MXview database in one click, including topology, job scheduling, events, and device properties
- Scheduling for periodic configuration backup
- Save history of configuration changes
- Comparison tool for checking differences between 2 configurations

System Requirements

CPU	2 GHz or faster dual core CPU
RAM	2 GB
Hard Disk Space	10 GB
OS	Windows XP Professional, Windows 7 (32/64-bit), Windows 8 (32/64-bit), Windows Server 2008 (32/64-bit), Windows Server 2012 (32/64-bit)

Ordering Information

Commercial Versions

MXview-2000: Industrial network management software with a license for 2000 nodes (by IP address)

MXview-1000: Industrial network management software with a license for 1000 nodes (by IP address)

MXview-500: Industrial network management software with a license for 500 nodes (by IP address)

MXview-250: Industrial network management software with a license for 250 nodes (by IP address)

MXview-100: Industrial network management software with a license for 100 nodes (by IP address)

MXview-50: Industrial network management software with a license for 50 nodes (by IP address)

License Upgrade

MXview Upgrade-50: License expansion of MXview industrial network management software by 50 nodes (by IP address)

Trial Version

MXview Trial Version: A free trial version of MXview is available for download from Moxa's website

Package Checklist

- MXview CD (includes the MXview software and related documents)
- License card

: Supported Devices

MXview v2.6 supports the following devices by default.

Series	Model Name	Firmware
AWK Series	AWK-1121	V1.4
	AWK-1127	V1.4
	AWK-3121	V1.6
	AWK-3131	V1.1
	AWK-4121	V1.6
	AWK-4131	V1.1
EDR Series	EDR-G903	V2.1
	EDR-G902	V1.0
	EDR-810	V3.2
EDS Series	EDS-405A/408A	V2.6
	EDS-405A/408A-EIP	V3.0
	EDS-405A/408A-PN	V3.1
	EDS-405A-PTP	V3.3
	EDS-505A/508A/516A	V2.6
	EDS-510A	V2.6
	EDS-518A	V2.6
	EDS-510E	V4.0
	EDS-G508E/G512E/G516E	V4.0
	EDS-G512E-8PoE	V4.0
	EDS-608/611/616/619	V1.1
	EDS-728	V2.6
	EDS-828	V2.6
	EDS-G509	V2.6
	EDS-P510	V2.6
	EDS-P510A-8PoE	V3.1
	EDS-P506A-4PoE	V2.6
EOM Series	EOM-104/104-FO	V1.2
ICS Series	ICS-G7526/G7528	V1.0
	ICS-G7826/G7828	V1.1
	ICS-G7748/G7750/G7752	V1.2
	ICS-G7848/G7850/G7852	V1.2
	ICS-G7526A/G7528A	V4.0
	ICS-G7826A/G7828A	V4.0
	ICS-G7748A/G7750A/G7752A	V4.0
	ICS-G7848A/G7850A/G7852A	V4.0

Series	Model Name	Firmware
IEX Series	IEX-402-SHDSL	V1.0
	IEX-402-VDSL2	V1.0
IKS Series	IKS-6726/6728	V2.6
	IKS-6524/6526	V2.6
	IKS-G6524	V1.0
	IKS-G6824	V1.1
	IKS-6728-8PoE	V3.1
	IKS-6726A/6728A	V4.0
	IKS-G6524A	V4.0
	IKS-G6824A	V4.0
ioLogik Series	ioLogik E2210	V3.7
	ioLogik E2212	V3.7
	ioLogik E2214	V3.7
	ioLogik E2240	V3.7
	ioLogik E2242	V3.7
	ioLogik E2260	V3.7
	ioLogik E2262	V3.7
	ioLogik W5312	V1.7
	ioLogik W5340	V1.8
MGate Series	MGate 5102	V1.0
	MGate 5105-MB-EIP	V1.0
	MGate 5101-PBM-MN	V1.1
	MGate MB3170	V2.1
	MGate MB3180	V1.3
	MGate MB3270	V2.1
	MGate MB3280	V2.1
	MGate MB3480	V2.2
	MGate EIP3170	V1.2
	MGate EIP3170I	V1.2
	MGate EIP3270	V1.2
	MGate EIP3270I	V1.2

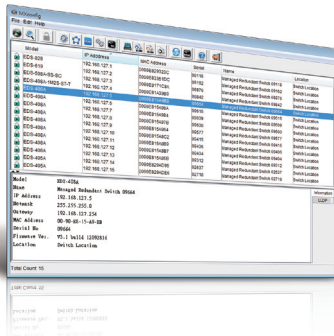
Series	Model Name	Firmware
NPort Series	NPort S8455	V1.3
	NPort S8458	V1.3
	NPort 5110	V2.4
	NPort 5130/5150	V3.4
	NPort 5210/5230/5232	V2.6
	NPort 5410/5430/5450	V3.9
	NPort 5600-8-DT/5650-8-DT	V2.2
	NPort 5600	V3.5
	NPort 5610-8-DTL/5650-8-DTL	V1.1
	NPort 5110A/5130A/5150A	V1.1
	NPort 5210A/5230A/5250A	V1.1
	NPort IA5150/IA5250	V1.4
	NPort IA5150A/IA5250A	V1.1
	NPort IA5450A	V1.2
	NPort 6150/6250/6450	V1.9
	NPort 6610-8/6610-16/6610-32	V1.9
	NPort 6650-8/6650-16/6650-32	V1.9
	NPort 5150AI-M12	V1.0
PT Series	PT-7528	V3.0
	PT-7710	V1.2
	PT-7728	V2.6
	PT-7828	V2.6
	PT-G7509	V1.1
	PT-508/510	V3.0
	PT-G503-PHR-PTP	V4.0
TN Series	TN-5508/5510	V1.1
	TN-5516/5518	V1.2
	TN-5508-4PoE	V2.6
	TN-5516-8PoE	V2.6
VPort Series	VPort 26A-1MP	V1.2
	VPort 36-1MP	V1.1
	VPort P06-1MP-M12	V2.2

Note: MXview supports the listed or higher firmware versions.

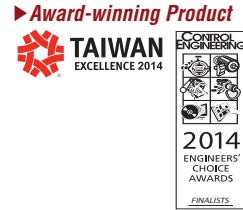
Note: Additional model names will be added as MXview is updated. Check Moxa's website for the most up-to-date information.

MXconfig

Industrial network configuration tool



- Mass managed function configuration increases deployment efficiency and reduces setup time
- Mass configuration duplication reduces installation cost
- Link sequence detection eliminates manual setting errors
- Configuration overview and documentation for easy status review and management
- Three users privilege levels enhance security and management flexibility



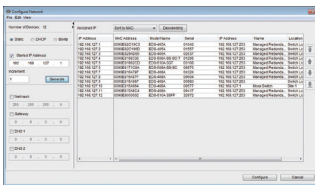
Introduction

Moxa's MXconfig is a comprehensive Windows-based utility that is used to install, configure and maintain multiple Moxa devices in industrial networks. This suite of useful tools helps users set the IP addresses of multiple devices with one click, configure the redundant protocols and VLAN settings, modify multiple network configurations of multiple Moxa devices, upload firmware to multiple devices, export/

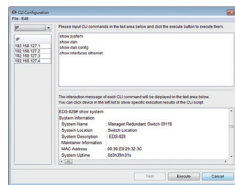
import configuration files, copy configuration settings across devices, easily link to web and Telnet consoles, and test device connectivity. MXconfig gives device installers and control engineers a powerful and easy way to mass configure devices, and effectively reduces the setup and maintenance cost.

Device Discovery and Fast Group Configuration

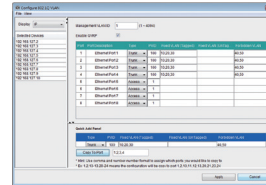
- Easy broadcast search of the network for all supported Moxa managed Ethernet devices
- Mass network setting (such as IP addresses, gateway, and DNS) deployment reduces setup time
- Mass managed functions deployment increases configuration efficiency
- Multiple grouping for easy classification
- User-friendly port selection panel provides physical port descriptions
- VLAN Quick-Add Panel speeds up setup time
- Deploy multiple devices with one click using CLI execution



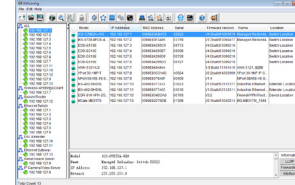
Network Setting



Execute CLI



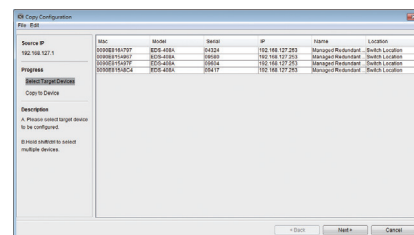
Quick Add Panel



Multiple Grouping

Fast Configuration Deployment

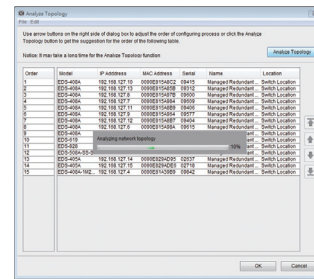
- Quick configuration: copy a specific setting to multiple devices and change IP addresses with one click



Copy Configuration

Link Sequence Detection

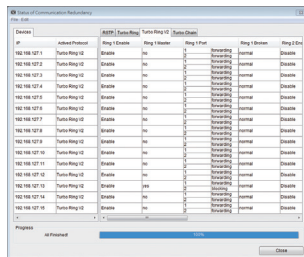
- Link sequence detection eliminates manual configuration errors and avoids disconnections, especially when configuring redundancy protocols or VLAN settings for a network in a daisy chain topology (line topology).
- Link sequence IP setting (LSIP) prioritizes devices and configure IP addresses by link sequence to enhance deployment efficiency, especially in a daisy chain topology (line topology).



Analyze Topology

Configuration Overview and Documentation

- Useful mass status overview and configuration check for each managed function.
- Generate reports on each managed function for multiple devices in the network.



Status Overview

- Export multiple configuration files with flexible filenames and import multiple configuration files to multiple devices.
- Export device list for easy backup, and import device list for quick searching.

A	B	C	D	E	F	G	H	I	J	K	L	M
IP	Active Protocol	Ring 1 Enable	Ring 1 Master	Ring 1 Port	Ring 2 Enable	Ring 2 Master	Ring 2 Port	Coupling Enable	Coupling Mode	Coupling Port		
1	192.168.127.1	Turbo Ring V2	Enable	1 forwarding 2 normal	normal	Disable	no	1 noRedundant 2 noRedundant	N/A	Disable	Dual Homing	1 noRedundant 2 noRedundant
2	192.168.127.2	Turbo Ring V2	Enable	1 forwarding 2 normal	normal	Disable	no	1 noRedundant 2 noRedundant	N/A	Disable	Dual Homing	1 noRedundant 2 noRedundant
3	192.168.127.3	Turbo Ring V2	Enable	1 forwarding 2 normal	normal	Disable	no	1 noRedundant 2 noRedundant	N/A	Disable	Dual Homing	1 noRedundant 2 noRedundant
4	192.168.127.4	Turbo Ring V2	Enable	1 forwarding 2 normal	normal	Disable	no	1 noRedundant 2 noRedundant	N/A	Disable	Dual Homing	1 noRedundant 2 noRedundant
5	192.168.127.5	Turbo Ring V2	Enable	1 forwarding 2 normal	normal	Disable	no	1 noRedundant 2 noRedundant	N/A	Disable	Dual Homing	1 noRedundant 2 noRedundant
6	192.168.127.6	Turbo Ring V2	Enable	1 forwarding 2 normal	normal	Disable	no	1 noRedundant 2 noRedundant	N/A	Disable	Dual Homing	1 noRedundant 2 noRedundant
7	192.168.127.6	Turbo Ring V2	Enable	1 forwarding 2 normal	normal	Disable	no	1 noRedundant 2 noRedundant	N/A	Disable	Dual Homing	1 noRedundant 2 noRedundant
8	192.168.127.7	Turbo Ring V2	Enable	1 forwarding 2 normal	normal	Disable	no	1 noRedundant 2 noRedundant	N/A	Disable	Dual Homing	1 noRedundant 2 noRedundant
9	192.168.127.8	Turbo Ring V2	Enable	1 forwarding 2 normal	normal	Disable	no	1 noRedundant 2 noRedundant	N/A	Disable	Dual Homing	1 noRedundant 2 noRedundant
10	192.168.127.9	Turbo Ring V2	Enable	1 forwarding 2 normal	normal	Disable	no	1 noRedundant 2 noRedundant	N/A	Disable	Dual Homing	1 noRedundant 2 noRedundant
11	192.168.127.10	Turbo Ring V2	Enable	yes 1 forwarding 2 blocking	normal	Disable	no	1 noRedundant 2 noRedundant	N/A	Disable	Dual Homing	1 noRedundant 2 noRedundant

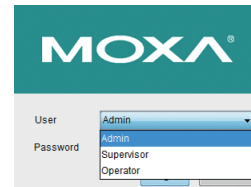
File Export

Unlock Devices and User Privileges

- Mass device unlocking and password file export for quick unlocks.
- Three user privilege levels to enhance management flexibility and security: Admin, Supervisor, and Operator.



Unlock Devices



Three User Privilege Levels

System Requirements

CPU	2 GHz or faster dual core CPU
RAM	256 MB
Hard Disk Space	1 GB
Operating System	Windows XP Professional, Windows 7 (32/64-bit), Windows 8 (32/64-bit), Windows Server 2008 (32/64-bit), Windows Server 2012 (32/64-bit)

: Supported Devices

MXconfig v2.2 supports the following devices:

Series	Model Name	Firmware
AWK Series	AWK-1121	V1.4
	AWK-1127	V1.4
	AWK-3121	V1.10
	AWK-3121-SSC-RTG	V1.4
	AWK-3121-M12-RTG	V1.4
	AWK-3131	V1.2
	AWK-3131-M12-RCC	V1.0
	AWK-4121	V1.10
	AWK-4131	V1.2
	AWK-5222	V1.7
	AWK-5232	V1.3
	AWK-6222	V1.7
	AWK-6232	V1.3
EDR Series	EDR-810	V3.2
EDS Series	EDS-405A/408A	V3.1
	EDS-405A/408A-EIP	V3.1
	EDS-405A/408A-PN	V3.1
	EDS-405A-PTP	V3.3
	EDS-505A/508A/516A	V3.1
	EDS-510A	V3.1
	EDS-518A	V3.1
	EDS-510E	V4.0
	EDS-G508E/G512E/G516E	V4.0
	EDS-G512E-8PoE	V4.0
	EDS-608/611/616/619	V3.1
	EDS-728	V3.1
	EDS-828	V3.1
	EDS-G509	V3.1
	EDS-P510	V3.1
	EDS-P510A-8PoE	V3.1
	EDS-P506A-4PoE	V3.1

Series	Model Name	Firmware
ICS Series	ICS-G7526/G7528	V3.1
	ICS-G7826/G7828	V3.1
	ICS-G7748/G7750/G7752	V3.1
	ICS-G7848/G7850/G7852	V3.1
	ICS-G7526A/G7528A	V4.0
	ICS-G7826A/G7828A	V4.0
	ICS-G7748A/G7750A/G7752A	V4.0
	ICS-G7848A/G7850A/G7852A	V4.0
IEX Series	IEX-402-SHDSL	V1.0
	IEX-402-VDSL2	V1.0
IKS Series	IKS-6726/6728	V3.1
	IKS-G6524	V3.1
	IKS-G6824	V3.1
	IKS-6728-8PoE	V3.1
	IKS-6726A/6728A	V4.0
	IKS-G6524A	V4.0
	IKS-G6824A	V4.0
MGate Series	IKS-6728A-8PoE	V4.0
	MGate MB3170	V2.1
	MGate MB3180	V1.3
	MGate MB3270	V2.1
	MGate MB3280	V2.1
	MGate MB3480	V2.2
	MGate EIP3170	V1.1
	MGate EIP3170I	V1.1
	MGate EIP3270	V1.1
	MGate EIP3270I	V1.1

Series	Model Name	Firmware
NPort Series	NPort S8455	V1.4
	NPort S8458	V1.4
PT Series	PT-7528	V3.1
	PT-7710	V3.1
	PT-7728	V3.1
	PT-7828/7828-PTP	V3.1
	PT-G7509	V3.1
TN Series	PT-508/510	V3.1
	TN-5508/5510	V3.1
	TN-5516/5518	V3.1
	TN-5508-4PoE	V3.1
	TN-5510-PoE	V3.1
	TN-5516-8PoE	V3.1
VPort Series	TN-5518-PoE	V3.1
	VPort 26A-1MP	V1.2
	VPort 36-1MP	V1.1
	VPort P06-1MP-M12	V2.2

Note: MXconfig supports the listed or higher firmware versions.

Note: Additional model names will be added as MXconfig is updated. Check Moxa's website for the most up-to-date information.