

# **UPort™ 200/400 Series Quick Installation Guide**

---

**Third Edition, January 2015**



© 2015 Moxa Inc. All rights reserved.

**P/N: 1802002001012**

## Overview

The UPort™ 200/400 series industrial-grade USB 2.0 hubs expand 1 USB port to 4 or 7 ports. The hubs are designed to provide true USB 2.0 Hi-Speed 480 Mbps data transmission through each port, even for heavy-load applications. As USB-IF certified products, the UPort™ 200/400 series have passed high speed compliance testing and are eligible to bear the USB logo. In addition to providing ESD level 4 protection from static damage, the UPort™ 200/400 series offers a power jack and terminal block dual power input solution for industrial environments.

### **The following models comprise the UPort™ 400 series:**

UPort™ 404: 4-port industrial grade USB hub, adaptor included.

UPort™ 407: 7-port industrial grade USB hub, adaptor included.

UPort™ 404-T: 4-port industrial grade USB hub, wide temperature.

UPort™ 407-T: 7-port industrial grade USB hub, wide temperature.

### **The following models comprise the UPort™ 200 series:**

UPort™ 204: 4-port entry level USB hub, adaptor included

UPort™ 207: 7-port entry level USB hub, adaptor included

## Features

- Hi-Speed USB 2.0 for up to 480 Mbps USB transmission
- USB-IF certification
- 15KV ESD Level 4 protection for all USB ports
- Comprehensive diagnostic LEDs

### **UPort™ 400 series features:**

- Dual power input supply (power jack and terminal block)
- Rugged metal housing
- DIN-Rail and wall mountable
- Bus power or external power options (UPort™ 404)

### **UPort™ 200 series features:**

- External power input supply (power jack)
- Rugged housing
- Wall mountable
- Bus power or external power options (UPort™ 204)

## Package Checklist

The UPort™ 200/400 series package should contain the following items. If any of these items is missing or damaged, please contact Moxa for replacement.

- UPort™ 200 or UPort™ 400: 4-port or 7-port industrial-grade USB hub
- Power adaptor (Provide only for Standard Model)
- UPort™ 200/400 series Quick Installation Guide (Printed)
- USB-IF certified USB cable
- Warranty card

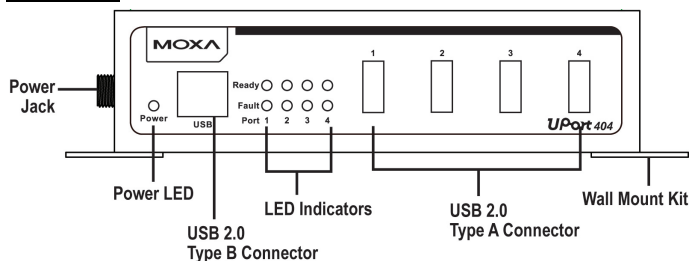
*Optional Accessories (can be purchased separately)*

- DK-35A: Mounting kit for 35-mm DIN-Rail for UPort™ 400 series
- Wall mount kit: Metal plates and screws package for UPort™ 400 series
- DIN-Rail kit: DIN-Rail kit for UPort™ 400 series

## Hardware Introduction

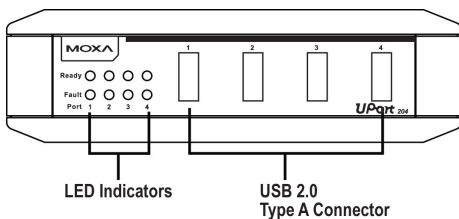
An example of the UPort™ 404 front panel:

### Front View

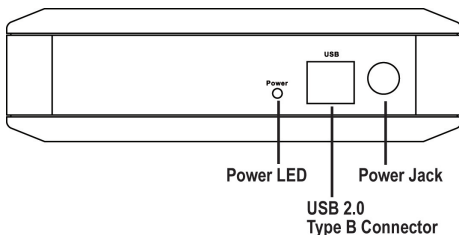


An example of the UPort™ 204 front/back panel:

### Front View



### Back View



**LED Indicators**

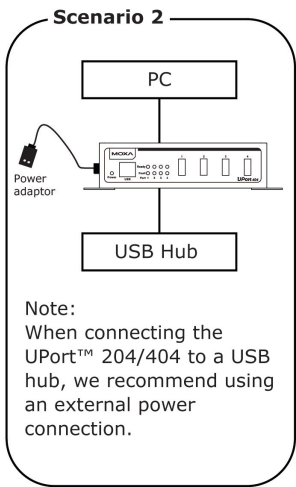
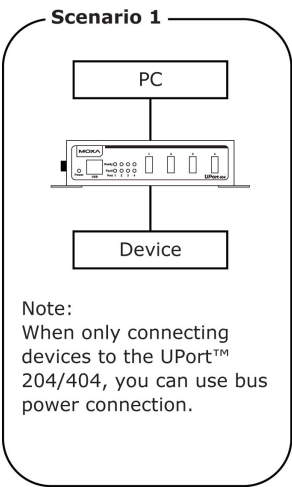
The LED indicators on the panel are used to display status as follows:

Type	Color	Meaning
Ready	Green	Steady on: Power is on and UPort™ is functioning normally
	Off	1. No device connected 2. Device cannot be detected
Fault	Red	Steady on: Device over current is detected
Power	Yellow	Bus power
	Green	External power

**Power Input Supply**

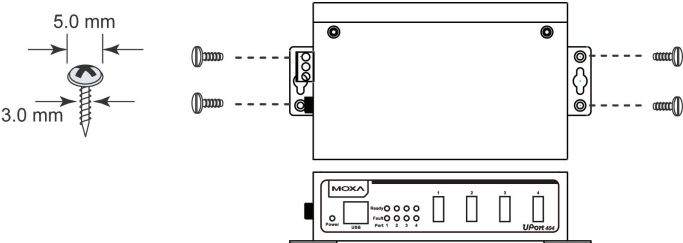
The following table shows power input supply.

	UPort™ 404	UPort™ 407	UPort™ 204	UPort™ 207
Bus Power	V	–	V	–
Self Power	V	V	V	V



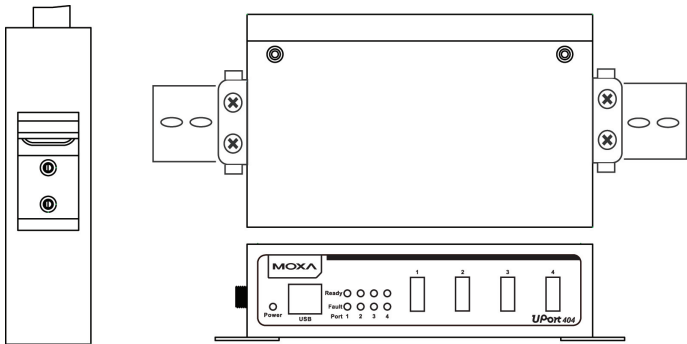
**Wall Mounting**

The UPort™ 400 series comes with two metal attachment plates to allow installation on a wall. First, attach the brackets to the back of the UPort™ 400 with screws. Next, mount the unit to a wall with screws. Screws should be less than 5.0 mm in head diameter, and less than 3.0 mm in shaft diameter



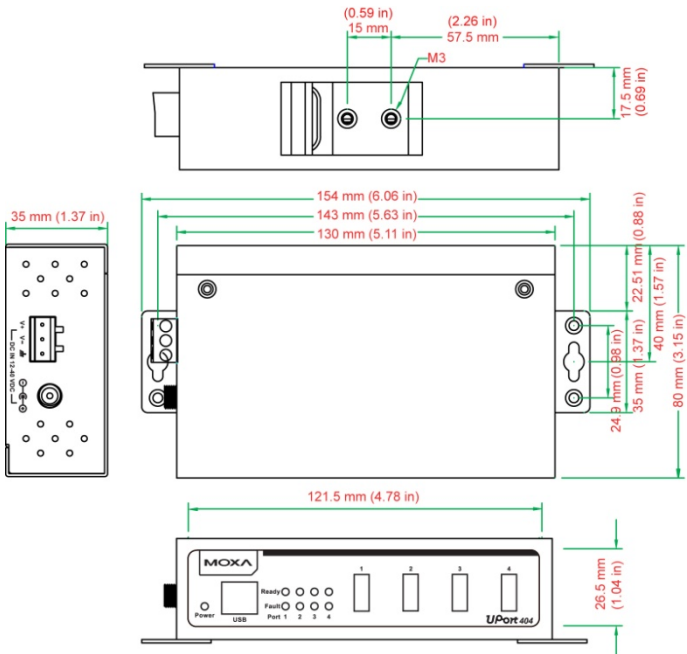
**DIN-Rail Mounting**

The UPort™ 400 series comes with DIN-Rail kit to allow installation on a DIN-Rail. DIN-Rail attachments can be purchased separately to attach the product to a DIN-Rail. The DIN-Rail attachments should be oriented with the metal springs on top.

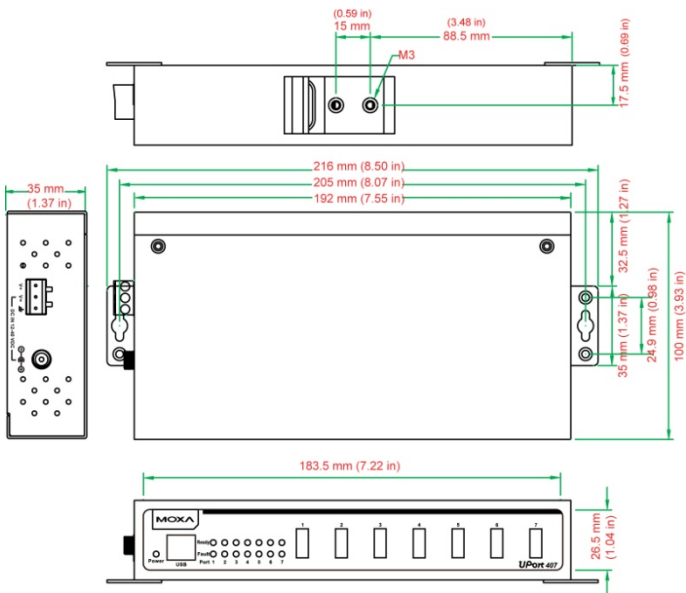


**Dimensions**

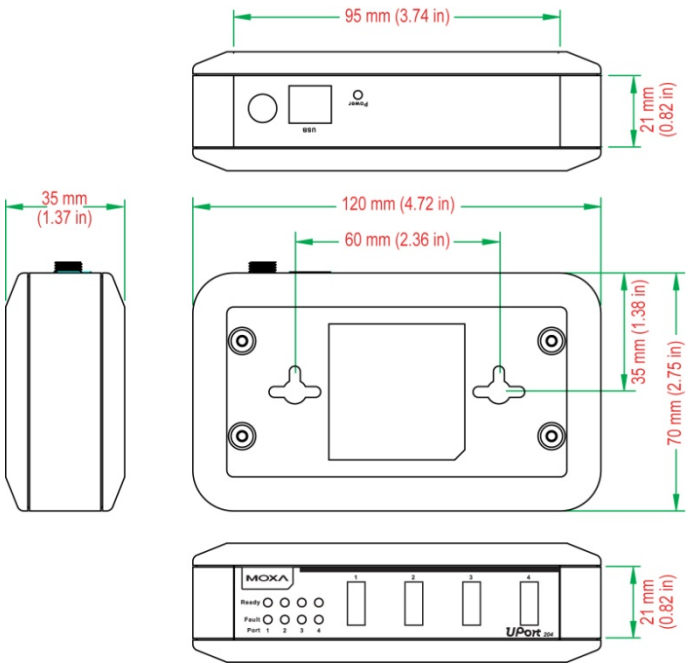
**UPort™ 404**



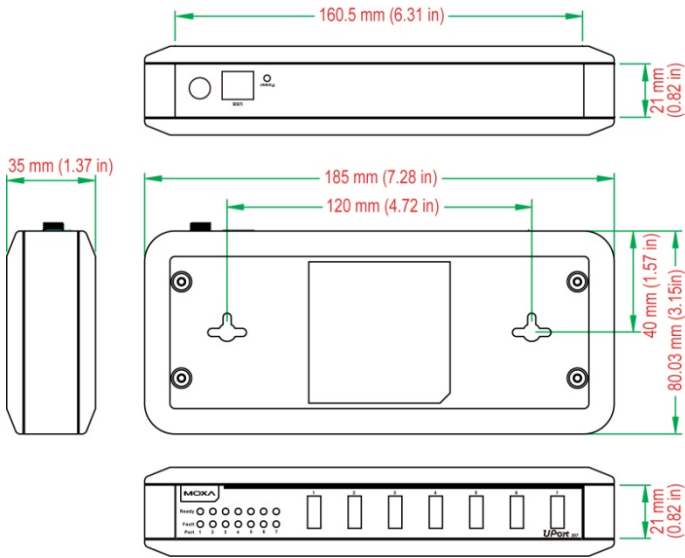
UPort™ 407



UPort™ 204



# UPort™ 207



## Specifications

### USB Interface

- Compliance: USB 1.1/2.0 compliant
- Upstream: 1 USB port, Type B connector
- Downstream:
  - UPort™ 204/404: 4 USB ports, Type A connectors
  - UPort™ 207/407: 7 USB ports, Type A connectors
- Speed: 480 Mbps (Hi-Speed USB) and 12 Mbps (Full-Speed USB)

### Physical Characteristics

- Housing:
  - UPort™ 200 series: Polycarbonate (PC)
  - UPort™ 400 series: Aluminum
- Dimensions:
  - UPort™ 404/404-T: 80 x 35 x 130 mm (3.15 x 1.38 x 5.12 in)
  - UPort™ 407/407-T: 100 x 35 x 192 mm (3.94 x 1.38 x 7.55 in)
  - UPort™ 204: 70 x 35 x 120 mm (2.76 x 1.38 x 4.72 in)
  - UPort™ 207: 80 x 35 x 185 mm (3.15 x 1.38 x 7.28 in)

### Environmental Limits

- Operating Temperature:
  - Standard Models: 0 to 60°C (32 to 140°F)
  - Wide Temp. Models: -40 to 85°C (-40 to 185°F)
- Operating Humidity: 5 to 95% RH  
(For use in Pollution Degree 2 environments)
- Storage Temperature:
  - Standard Models: -20 to 75°C (-4 to 167°F)
  - Wide Temp. Models: -40 to 85°C (-40 to 185°F)

## Power Requirements

Input Voltage: 12 to 40 VDC (external power)

Power Consumption:

UPort™ 404:

1300 mA @ 12 VDC, 690 mA @ 24 VDC, 470 mA @ 36 VDC

UPort™ 407:

2300 mA @ 12 VDC, 1130 mA @ 24 VDC, 790 mA @ 36 VDC

UPort™ 204:

1210 mA @ 12 VDC, 610 mA @ 24 VDC, 430 mA @ 36 VDC

UPort™ 207:

2170 mA @ 12 VDC, 1070 mA @ 24 VDC, 730 mA @ 36 VDC

Regulatory Approvals:

EN61000-3-2, EN61000-3-3, EN61000-4-2, EN61000-4-3,

EN61000-4-4, EN61000-4-5, EN61000-4-6, EN61000-4-8,

EN61000-4-11, EN61000-6-2, EN61000-6-4, FCC Part 15 Class A,

UL508\*, LVD

UL508\*: Maximum Surrounding Air Temperature: 60°C

## Warranty

Warranty Period: 5 years

Details: See [www.moxa.com/warranty](http://www.moxa.com/warranty)

## Compliance Notice



This product complies with Chinese RoHS (Restriction of Hazardous Substances) regulations for Electronic Information Products.



### CE Warning

This is a Class A product. In a domestic environment, this product may cause radio interference in which case the user may be required to take appropriate measures.

## Federal Communications Commission Statement

FCC - This device complies with part 15 of the FCC Rules. Operation is subject to the following two conditions: (1) This device may not cause harmful interference, and (2) this device must accept any interference received, including interference that may cause undesired operation.



### FCC Warning

This equipment has been tested and found to comply with the limits for a Class A digital device, pursuant to part 15 of the FCC Rules. These limits are designed to provide reasonable protection against harmful interference when the equipment is operated in a commercial environment. This equipment generates, uses, and can radiate radio frequency energy and, if not installed and used in accordance with the instruction manual, may cause harmful interference to radio communications. Operation of this equipment in a residential area is likely to cause harmful interference in which case the user will be required to correct the interference at his own expense.



**Technical Support Contact Information**  
**[www.moxa.com/support](http://www.moxa.com/support)**

Moxa Americas:

Toll-free: 1-888-669-2872

Tel: 1-714-528-6777

Fax: 1-714-528-6778

Moxa China (Shanghai office):

Toll-free: 800-820-5036

Tel: +86-21-5258-9955

Fax: +86-21-5258-5505

Moxa Europe:

Tel: +49-89-3 70 03 99-0

Fax: +49-89-3 70 03 99-99

Moxa Asia-Pacific:

Tel: +886-2-8919-1230

Fax: +886-2-8919-1231