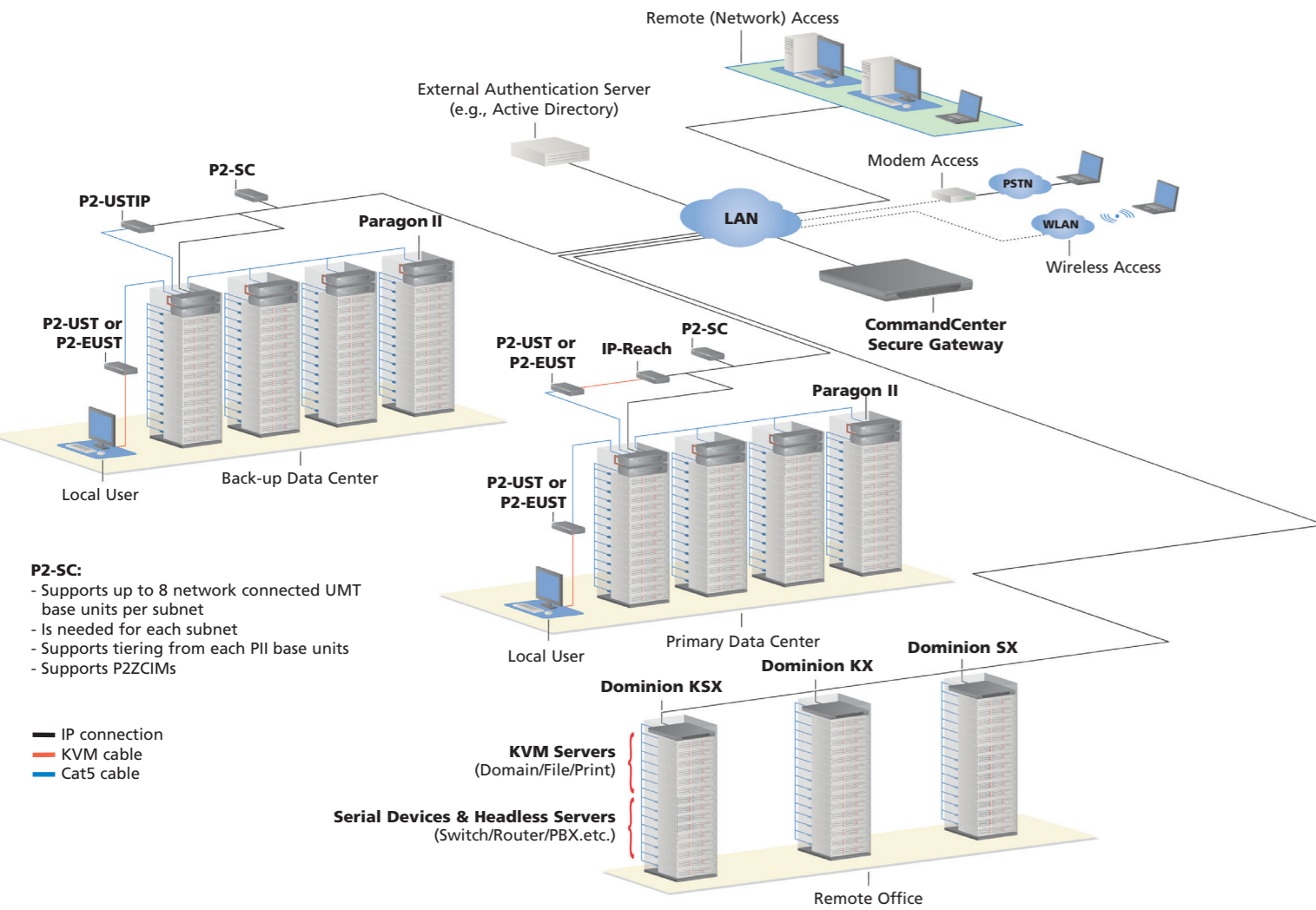


## Paragon II - A Part of your Centrally Controlled Enterprise



**P2-SC:**  
 - Supports up to 8 network connected UMT base units per subnet  
 - Is needed for each subnet  
 - Supports tiering from each PII base units  
 - Supports P2ZCIMS

— IP connection  
 — KVM cable  
 — Cat5 cable

Note: This is a sample configuration design; Raritan products will work in various configurations and in larger environments.

### When you're ready to take control, do it with Paragon II.

Call +31-10-2844040 or visit [Raritan.info](http://Raritan.info)

Raritan is a leading provider of products for managing IT equipment and the mission-critical applications and services that run on it. Raritan's highly reliable and responsive IT management solutions - based on KVM (Keyboard, Video, Mouse) switches, serial console servers, management software and remote connectivity products - enable companies to proactively monitor and manage system health and vulnerability, as well as troubleshoot, access and repair faults from anywhere, at anytime. This simplifies and accelerates data center work processes - improving service uptime and staff productivity. Raritan's solutions are used to manage more than 50,000 data centers and other IT sites around the world. Raritan also serves the OEM market by developing advanced, hardware-based, remote-management components based on digital KVM-over-IP and IPMI technology. Founded in 1985, Raritan is celebrating over 20 years of technical innovation. Raritan has 36 offices worldwide, and its products are distributed in 76 countries. The European headquarters is located in the Netherlands. For more information, please visit [Raritan.info](http://Raritan.info)

## Specifications



Paragon II Main Switching Units	Description	Dimensions - (WxDxH)	Weight	Power
P2-UMT1664M	16 users x 64 server ports, expansion slot, stacking port, network port	440 x 290 x 89mm	5,68 kg	100V/240V 50/60 Hz 0,6A
P2-UMT832M	8 users x 32 server ports, expansion slot, stacking port, network port	440 x 290 x 44mm	4,46 kg	100V/240V 50/60 Hz 0,6A
P2-UMT442	4 users x 42 server ports, expansion slot, network port	440 x 290 x 44mm	4,59 kg	100V/240V 50/60 Hz 0,6A
P2-UMT242	2 users x 42 server ports, network port	440 x 290 x 44mm	4,54 kg	100V/240V 50/60 Hz 0,6A

Paragon II Stacking Units	Description	Dimensions - (WxDxH)	Weight	Power
P2-UMT1664S	64 expansion server ports for stacking with P2-UMT1664M	290 x 440 x 89mm	5,44 kg	100V/240V 50/60 Hz 0,6A
P2-UMT832S	32 expansion server ports for stacking with P2-UMT832M unit	290 x 440 x 44mm	4,08 kg	100V/240V 50/60 Hz 0,6A



Paragon II User Stations	Description	Dimensions - (WxDxH)	Weight	Power
P2-UST	Analog access point with PS/2, USB and Sun console	290 x 255 x 44mm	1,9 kg	100V/240V 50/60 Hz 0,6A
P2-EUST	Analog access point that provides enhanced video for PS/2, USB and SUN consoles	290 x 255 x 44mm	1,9 kg	100V/240V 50/60 Hz 0,6A
P2-USTIP1	Remote digital access point for 1 KVM/IP user	440 x 291 x 44mm	3,65 kg	115V/230V 50/60 Hz 0,3A
P2-USTIP2	Remote digital access point for 2 KVM/IP users	440 x 291 x 44mm	3,70 kg	115V/230V 50/60 Hz 0,6A



Paragon II System Controller	Description	Dimensions - (WxDxH)	Weight	Power
P2-SC	Access and controller for multiple Paragon II Systems	440 x 290 x 44mm	4,1 kg	100/240V, 50/60 Hz 2,0A

Paragon CIMs	Description	Paragon CIMs	Description
P2CIM-PS2	CIM for PS/2	P2ZCIM-USBL	ZCIM for USB with a 0,9m cable for use with a cable management arm
P2CIM-SUN	CIM for SUN	P2ZCIM-SUNL	ZCIM for Sun with a 0,9m cable for use with a cable management arm
P2CIM-USBG2	CIM for USB/Sun USB configurations and P2-HUBPAC	P2CIM-AP2	CIM for PS/2 provides automatic skew compensation with P2-EUST
P2CIM-PS2DUAL	CIM for PS/2 provides 2 separate channel ports	P2CIM-ASUN	CIM for Sun provides automatic skew compensation with P2-EUST
P2ZCIM-PS2	ZCIM for PS2	P2CIM-AUSB	CIM for USB/Sun USB provides automatic skew compensation with P2-EUST
P2ZCIM-USB	ZCIM for USB. Features a toggle switch to allow use with both Sun and non-Sun USB computer	P2CIM-AP2DUAL	CIM for PS/2 provides 2 separate channel ports and supports automatic skew compensation with P2-EUST
P2ZCIM-SUN	ZCIM for Sun	TER-ZCIM	RJ45 Terminator
P2ZCIM-PS2L	ZCIM for PS2 with a 0,9m cable for use with a cable management arm		

<b>Warranty</b>	<b>Two Years.</b> In addition, Raritan offers two years extended warranty.
-----------------	--

©2006 Raritan, Inc. All rights reserved. Raritan, CommandCenter, Dominion, IP-Reach and Paragon Manager are registered trademarks of Raritan, Inc. All other marks are trademarks or registered trademarks of their respective manufacturers.  
 - Specifications are subject to change without notice.



## Industry-leading Cat5 Analog KVM Switch with Ultra-high Performance Video

**Paragon II**  
 Paragon II is a stackable, Cat5 KVM switch that allows IT staff to manage up to 10.000 ports.

**P2-UMT242**  
 - 2-user  
 - Up to 42 ports

**P2-UMT442**  
 - 4-user  
 - Up to 42 ports

**P2-UMT832M**  
 - 8-user  
 - Up to 32 ports

**P2-UMT832S**  
 - P2-UMT832M Stacking unit  
 - Stack an additional 32 ports

**P2-UMT1664M**  
 - 16-user  
 - Up to 64 ports

**P2-UMT1664S**  
 - P2-UMT1664M Stacking unit  
 - Stack an additional 64 ports

### Paragon II System Controller

**P2-SC**  
 - An interface device that allows multiple Paragon II systems to be remotely accessed and controlled through CommandCenter. Secure Gateway.

**Higher video resolution over greater distances and non-blocked access combined with the industry's highest port density, optional integrated KVM-over-IP and rich management capabilities**

Paragon II is a Cat5 KVM (Keyboard, Video, Mouse) switch that gives IT professionals the power to securely access and control servers and other network devices anytime, anywhere, with near real-time keyboard and mouse response. Unique in the industry, Paragon II units can be stacked to gain non-blocked access to up to 128 servers; units can be tiered and enhanced with optional memory cards to scale up to 10.000 servers, dramatically reducing costs of data center equipment and rack space, while providing the industry's best video quality, manageability, response and security. Optional KVM-over-IP access gives IT professionals the power and flexibility to securely access and control servers and other network devices anytime, anywhere. A rich suite of management features includes logging and audit trails, system-wide reset from a user station, and a single, consolidated view of all Paragon-connected devices.

For applications requiring ultra-high video resolution and performance, such as video production and CAD/CAM, Paragon II's Enhanced User Station (P2-EUST) supports resolutions as high as 1600 x 1200 and distances in excess of 213 meters - an industry first. Even greater distances can be supported at slightly lower resolutions; for example, up to 300 meters at 1280 x 1024. All resolutions are supported at refresh rates of 60 Hz, 75 Hz and 85 Hz.

### Innovative modular architecture for flexibility and scalability

Paragon II distributes KVM switching and control functions across modular, intelligent components:

**Main Switching Unit (M model)** - A secure, intelligent non-blocked control unit that connects users to servers. Its stackable architecture provides the industry's highest port density, making it ideal for large data centers with densely packed racks.

**Stacking Unit (S model)** - A cost-effective, space-saving expansion unit that easily brings each switch up to 128 non-blocked ports with less cable than cascading. Stacking units are compatible with Paragon II models P2-UMT832M and P2-UMT1664M. These units reduce the clutter of multiple cables between tiers as well as save rack space and HVAC costs.

**User Station (P2-UST)** - Connects the user's keyboard, monitor and mouse to the Main Switching Unit. Designed to fit conveniently under the user's monitor, the Paragon II User Station includes an intuitive On-Screen User Interface (OSUI) for easy access to attached servers. It connects to a USB, Sun® or PS/2® keyboard and mouse.

## The Industry's Best Cat5 Enterprise Class KVM Solution

**Enhanced User Station: (P2-EUST)** – Provides all of the P2-UST features plus superior video quality at greater distances. Supports both automatic and manual video tuning; video tuning occurs automatically, allowing administrators to save time on server setup, and/or fine-tune the video signal for the individual eye manually, if desired. All video settings are saved to a database for subsequent sessions. For video applications with extremely stringent signal tolerances, P2-EUST supports both manual skew compensation and automatic skew compensation when used with the new Paragon II CIMs (P2CIM-AUSB, P2CIM-APS2, P2CIM-ASUN and P2CIM-APS2DUAL). Support for video redirection allows administrators to redirect a server's video signal from one user station to another, a natural fit for NOC displays, video walls, broadcast control rooms, etc.

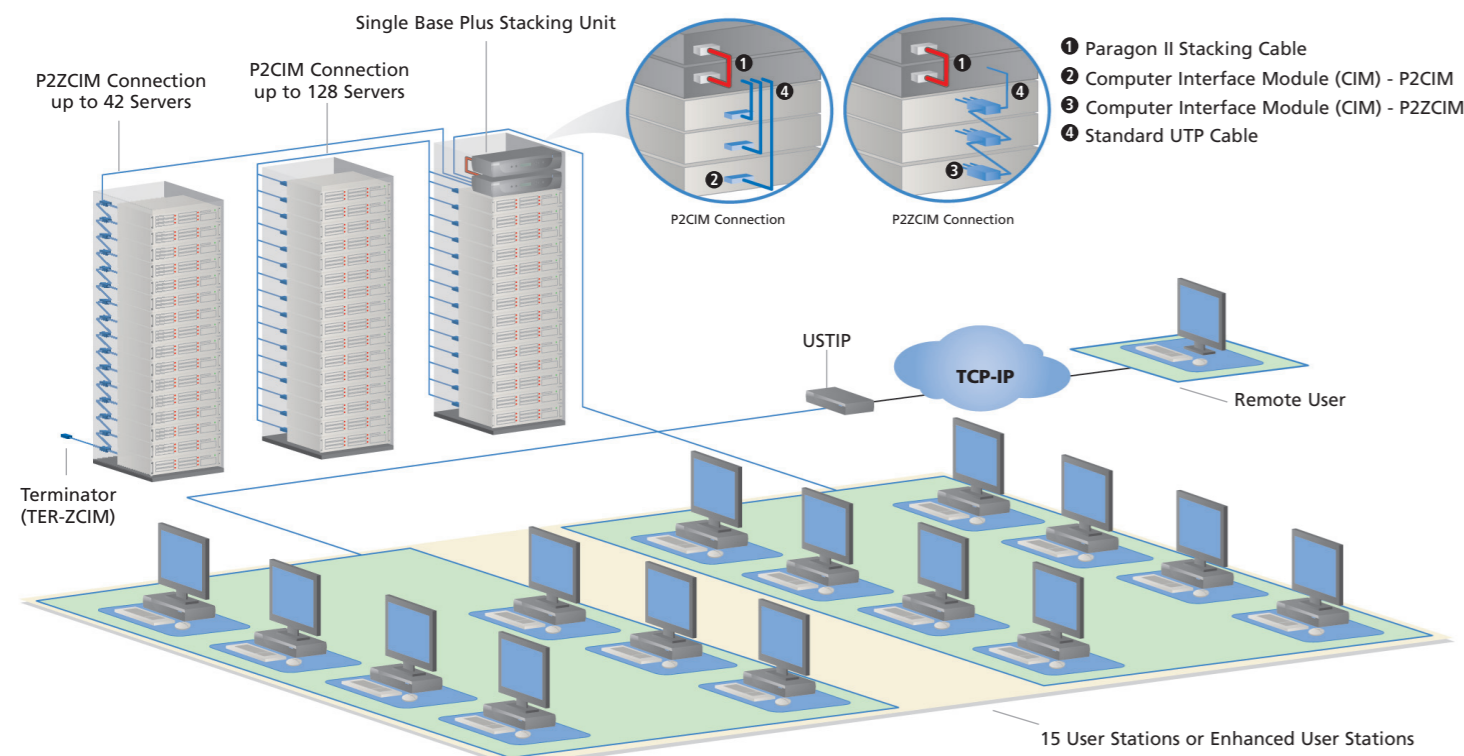
**User Station with integrated IP access (P2-USTIP)** – Provides browser-based, KVM-over-IP capability for anytime, anywhere access and control of servers connected to Paragon II. The P2-USTIP uses the familiar Raritan Remote Client GUI and combines the P2-UST User Station and IP gateway functionality into a single device with a slim form factor. It also provides power on/off/recycle capabilities for remote power strips.

The P2-USTIP supports 128-bit SSL encryption and local authentication through the Paragon II, or centralized authentication when used with Raritan's CommandCenter® Secure Gateway.

**System Controller (P2-SC)** – Allows multiple Paragon IIs to be controlled by CommandCenter Secure Gateway, Raritan's enterprise management software appliance. CommandCenter Secure Gateway provides a single sign-on and centralized authentication and authorization to a consolidated view and BIOS-level control of all the servers and serial devices in your IT infrastructure, from anywhere via a Web browser.

**Computer Interface Module (CIM)** – Connects Cat5/5e/6 cabling from the switch to the keyboard, video and mouse ports of the target server and provides "keep-alive" keyboard/mouse emulation to the server. In addition, the onboard firmware of the Paragon II CIM can be upgraded without interrupting server operation or disturbing the configuration data stored in the CIM.

**P2ZCIM** – Easily connect up to 42 PS/2, Sun and/or USB servers on a single Cat5 cable chain, using only one server port on a Paragon II unit. Extend distances of up to 300 m from the Main Switching Unit to the last P2ZCIM in the chain.



Note: This is a sample configuration design, Raritan products will work in various configurations.

## Paragon II – Elegantly Engineered for the Enterprise

### Performance

**Non-blocked access** – Up to 64 users have a clear path to up to 10,000 servers, dramatically increasing productivity with no user blocked from accessing any server.

**Ultra-high video performance over greater distances** – Paragon's Enhanced User Station (P2-EUST) provides both manual and automatic video tuning and skew compensation (automatic skew compensation requires new P2CIMs).

**Industry's highest video resolution** – The P2-EUST supports video resolutions up to 1600 x 1200 at distances greater than 213 m, and 1280 x 1024 at distances up to 300 m, both at refresh rates of 60 Hz, 75 Hz and 85 Hz.

**Cross-platform support** – Seamless access to all operating systems, platforms and connections: Linux®, Windows®, UNIX®, Novell®, Sun, IBM® RS/6000® and pSeries®, HP9000®, Alpha™, SGI®, ASCII/serial USB or PS/2.

### Scalability

**Grow as you expand**

- Add, relocate and hot-swap components without disruption as your data center needs change
- Add stacking units for up to 96 additional ports using stacking cables, to total 128 server ports
- Easily connect up to 42 Sun, USB and/or PS/2 servers on a single Cat5 cable chain, using P2ZCIMs

**Access from inside and outside the data center** – Flexibility to access servers from inside and outside the data center and globally over IP, anytime, anywhere.

**Enterprise solution** – May be deployed individually or integrated with any of Raritan's enterprise-wide data center solutions, including CommandCenter Secure Gateway.

### Flexibility

- Streamlines management capabilities with event logging and audit trails
- Distributed architecture lets you physically position servers and users where desired
- Includes integrated power management capabilities for remote power recycling
- Integrates via Paragon II System Controller into a single, logical "command and control" network with the Dominion® Series of KVM-over-IP switches, serial-over-IP secure console servers and remote office/branch office remote management appliances

### Features

- Continuous server availability via "keep alive" technology
- Simple, plug-and-play auto-configured installation
- Industry's broadest range of port densities
- CIMs for PS/2, Sun, USB and serial devices
- Flash firmware upgrades
- Supports video resolutions up to 1600 x 1200 at distances greater than 213 m – the highest in the industry

### Applications

**Enterprise-class solution** – Paragon II is a proven, stackable switch, the perfect infrastructure component for all high-density server environments, including:

- Corporate data centers
- Server farms
- Co-location facilities
- Web-hosting facilities
- Hardware and software testing labs
- Broadcast production facilities (via Pinnacle Fast Action Keyboard support)

### Paragon Manager™ software

- A single, consolidated view of all connected devices
- Add, remove or edit users
- Automatically detect power strips and associate power outlets with attached devices
- Perform system-wide firmware upgrades
- Log and audit system events

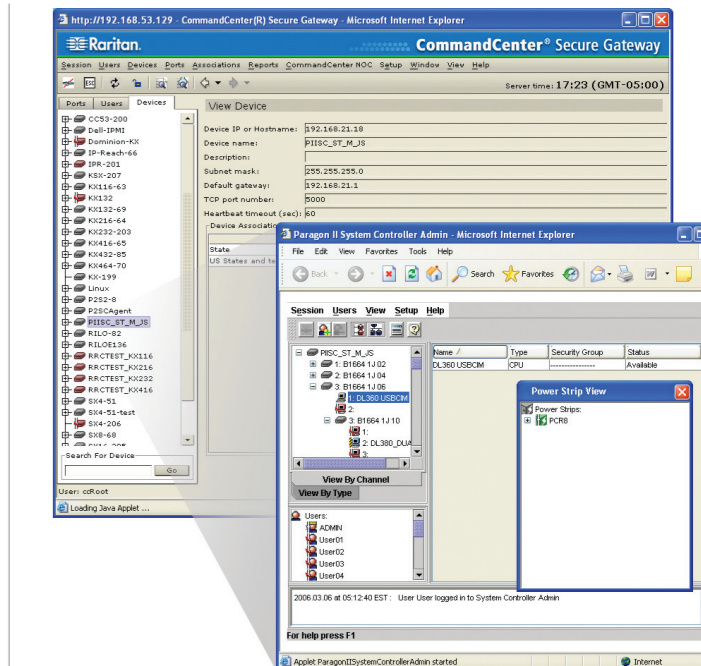
### Integrated power management

- Power on, power off or recycle power to servers and other attached devices
- Define security levels for individual users on a per-outlet basis (P2-UST and P2-EUST only)
- Automatically displays power strips and Paragon targets on the connected ports (P2-UST and P2-EUST only)

## P2-SC Brings Paragon II Switches Under Centralized Command

### Paragon II System Controller

Paragon II System Controller (P2-SC) is an intelligent interface device that allows multiple Paragon II systems to be accessed and controlled from a centralized CommandCenter Secure Gateway management appliance. With P2-SC, CommandCenter Secure Gateway seamlessly integrates Paragon II's non-blocked access and analog Cat5 KVM switching with the efficiency and flexibility of Raritan's Dominion Series of KVM-over-IP switches, serial-over-IP secure console servers and remote office/branch office remote management appliances.



CommandCenter Secure Gateway provides a single sign-on to a single interface, giving your administrators a 360-degree view, click-and-control access and BIOS-level control of all of your servers and IT devices, whether they're at the rack, at their desks, in the NOC or anywhere in the world. The result: increased uptime, dramatically increased IT productivity and vastly reduced incident response times and mean time to fix failures.

### By bringing Paragon switches under CommandCenter Secure Gateway control, P2-SC:

#### Simplifies access:

- Supports single sign-on and centralized authentication and authorization of remote Paragon II users
- Eliminates the need to maintain a list of Paragon II IP addresses

#### Enhances security:

- Centrally authenticates and authorizes remote users to Paragon systems

#### Increases efficiency:

- Logs and presents system activity and user changes
- Allows administrators to centrally upgrade Paragon II firmware

#### Improves usability:

- Manages user profiles
- Provides a central view of all target and multi-base units
- Supports system-wide reset of all servers within a Paragon II matrix

#### Increases scalability:

- Supports up to eight Paragon II base units per subnet
- Supports tiering from Paragon II base units (up to 3 tiers)
- Supports P2ZCIMs (up to 42 servers)

#### Compatibility

- Supports tiering configurations
- Supports Raritan power strips
- Supports Paragon ZCIMs
- Works with P2-USTIP, P2-HUBPAC, P2-EUST, P2-UST, CommandCenter Secure Gateway and IP Reach