



Dominion PX Series

Intelligent PDUs and inline meters that give you more control of power and cooling in the data center.

- ▶ Remote power monitoring and metering of current (amps), voltage, power (kVA, kW) and energy consumption (kWh)
- ▶ Capable of ISO/IEC $\pm 1\%$ billing-grade accuracy
- ▶ Environment probe/sensor ready
- ▶ Power information from individual outlets, units, lines and circuit breakers
- ▶ Individual outlet and outlet group switching available
- ▶ User-configurable, outlet-level delays for power sequencing
- ▶ Ethernet and serial access
- ▶ Alerts via SNMP, e-mail and syslog when thresholds are exceeded
- ▶ Supports HTTP, HTTPS, SSH, Telnet and SNMP
- ▶ Advanced authorization options, including permissions, LDAP/S, RADIUS and Active Directory®
- ▶ 256-bit AES encryption and strong passwords

Intelligent Rack Power Distribution

Broadest portfolio of smart PDUs to enable energy management in the data center

The Raritan PX family of high-quality rack power distribution units (PDUs) offers real-time remote power monitoring of current (amps), voltage, power (kVA, kW) and energy consumption (kWh) with $\pm 1\%$ billing-grade accuracy. The Dominion PX series offers hundreds of models to meet all your data center applications, including models with outlet switching, individual outlet metering, high power for blade servers and high density applications and 400V power distribution.

Raritan power management solutions help data center and facilities managers:

- ▶ Make informed capacity planning decisions
- ▶ Efficiently utilize power resources
- ▶ Improve uptime and staff productivity
- ▶ Save power and money
- ▶ Measure PUE (Power Usage Effectiveness) and drive green data center initiatives

Monitor and manage power, energy and the data center environment

With PX, accurate real-time power monitoring and metering is now available down to the individual outlets. PX provides alerts based on pre-set power and environment events. All PXs are environment-monitoring ready and accept Raritan's plug-and-play environment probes and sensors. The PX intelligent rack PDU allows you to:

- ▶ Find stranded power in racks
- ▶ Load balance lines and circuits
- ▶ Trend and track energy utilization and bill power costs to users
- ▶ Measure CO₂ footprint
- ▶ Remotely reboot servers and provision (turn on) power outlets in racks
- ▶ Detect data center hot spots
- ▶ Eliminate overcooling and increase temperature set points safely
- ▶ Support hot aisle containment and high-power blade racks

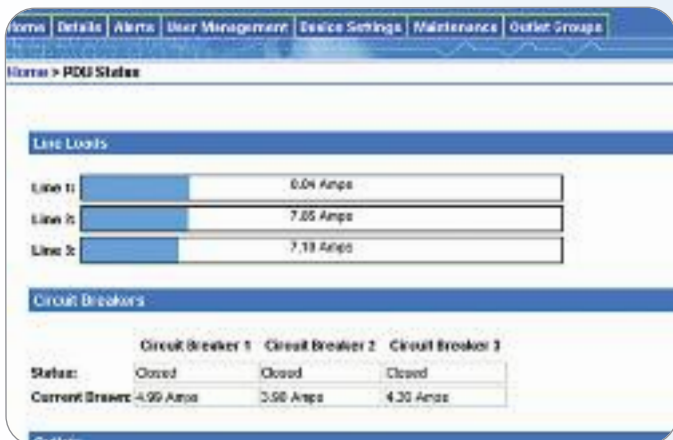
Take a step towards Green Grid's PUE Level 3

Raritan's Dominion PX gives you the granular power information required to get to Green Grid's PUE Level 2 and Level 3. Coupled with Power IQ®, Raritan's energy management software, data center managers can now centralize power control and analytics from Raritan's intelligent PDUs and a wide range of third-party rack PDUs and UPSs, including those from APC® and Server Technology.

Quality Rack PDUs with Intelligence

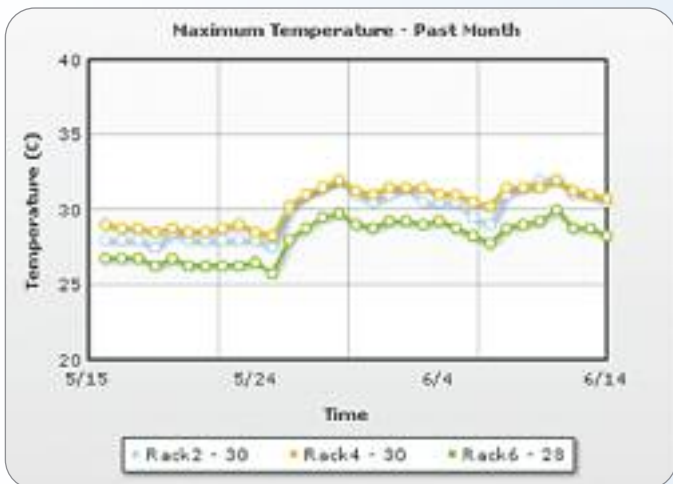
Simple, Web-Based Power and Energy Management

PX Web-Based GUI



- ▶ Set power and environmental thresholds and receive alerts
- ▶ Check status of PDUs, lines, circuit breakers and individual outlets
- ▶ Monitor data center environment
- ▶ Remotely provision and switch outlets
- ▶ Configure user access rights and security

Power IQ Energy Management Software



- ▶ Bulk configure multiple PXs to save time
- ▶ Centrally control outlets from PX and third-party PDUs
- ▶ Collect data from PX and third-party PDUs
- ▶ Polling from three seconds to every 24 hours
- ▶ Easy energy, environment and carbon footprint reports
- ▶ Open architecture to feed other data center management systems



Plug-and-Play Optional Environmental Sensors

- ▶ Monitor temperature and humidity to identify hot spots, confidently raise the ambient temperature of your data center to reduce cooling power consumption and manage static problems
- ▶ Save costs by leveraging PX to monitor both power and data center environment



High-Quality Construction and Components

- ▶ Solder connections to copper bus bars in PCBs
- ▶ ISO 9000 quality manufacturing
- ▶ Quality components from Tyco, Hubbell® and Mennekes®

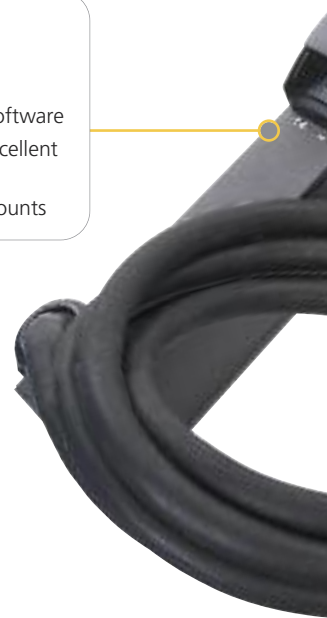


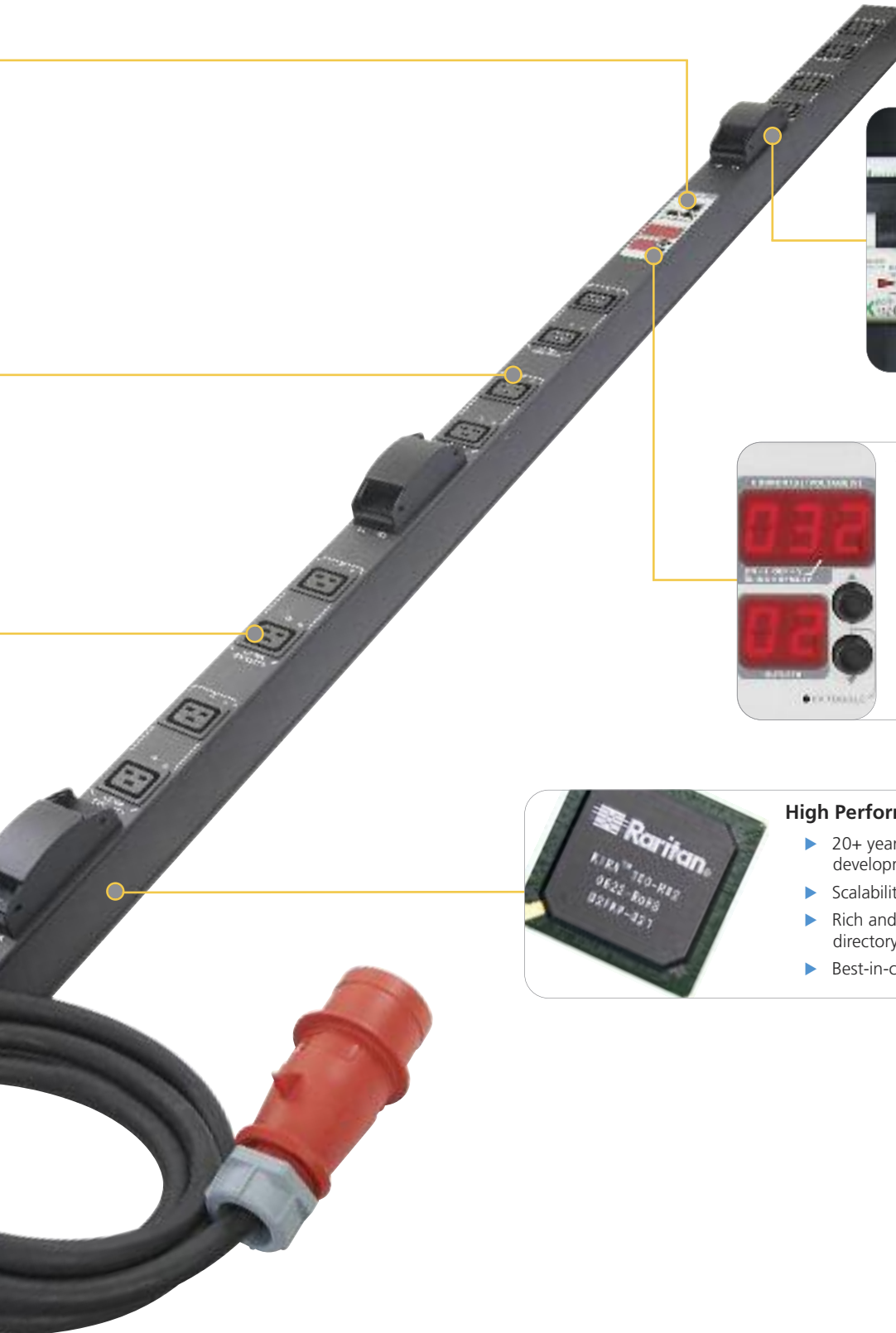
Outlet Metering with +/- 1% Accuracy

- ▶ Dedicated energy-metering chip per outlet
- ▶ Billing-grade power data (kWh) to report and/or billback power consumption
- ▶ User-adjustable power data sampling and buffering
- ▶ Rich data collected, including: V, A, kVA, kW, kWh

Extruded Aluminum Chassis

- ▶ Up to 36% less deep than competitive products
- ▶ Designed with 3D CAD/CAM software
- ▶ Lightweight and strong with excellent heat dissipation
- ▶ Versatile button and bracket mounts





UL489 Circuit Breakers

- ▶ Meet Underwriters Laboratories' latest branch circuit protection standards
- ▶ Unlike fuses, do not require an electrician or an inventory of spares
- ▶ Eliminate the possibility of installing a fuse with the wrong rating



Smart LED Display at the Rack

- ▶ Scroll through and check individual outlet power consumption
- ▶ Check total PDU or branch circuit consumption before adding devices
- ▶ Check line draw and balance for three-phase rack PDUs
- ▶ Three-color outlet status LED indicates on, off, overload, circuit breaker open, PDU booting and firmware upgrade



High Performance Processor

- ▶ 20+ years of data center management and embedded development experience
- ▶ Scalability and headroom for future upgrades
- ▶ Rich and full implementation network management, directory services and security
- ▶ Best-in-class user experience



A rapidly expanding product line to meet rapidly evolving data center needs

	Outlet Metered, Outlet Switched	Outlet Metered	Inline Metered	PDU Metered
Dominion PX Family	PX-5000 and DPX	PX-4000	PX-3000	PX-1000
Power Metering	Outlet, PDU	Outlet, PDU	Line, Circuit	Line, Circuit
Outlet Switching	•			
Outlet Mapping to Raritan KVM Switches	•			
Circuit Breaker Monitoring	•	•		•
Environment Probe/Sensor Ready	•	•	•	•
Directory Services Support (Active Directory, LDAP/S, RADIUS, local)	•	•	•	•
SNMP Manageable	•	•	•	•
Thresholds and Alerts for Power and Sensors	•	•	•	•
High Temp 60° C Models Available	•	•	•	•
Remote Access via Web and CLI	•	•	•	•
Compatible with Power IQ Energy Management Software	•	•	•	•

Broad range of options built to your specific needs

Hundreds of PX models available in numerous configurations:

- ▶ 100V, 208V, 230V and 400V inputs
- ▶ Single-phase and three-phase power
- ▶ 15A to 80A input
- ▶ Zero U, 1U and 2U form factors
- ▶ NEMA, IEC, Clipsal® and more plugs and receptacles
- ▶ Mixed outlet and voltage configurations
- ▶ Certifications include FCC Part 15, A, UL and cUL 60950, CE, plus PSE certified for Japan
- ▶ RoHS/WEEE compliant

To view PX screenshots, go to
www.raritan.com/px-screenshots

For SKUs, detailed specifications and mechanical drawings, or to test drive PX and Power IQ, go to
www.raritan.com/PX

Call **1.800.724.8090** or visit www.raritan.com/PX

© 2010 Raritan Inc. All rights reserved. Raritan®, Know more. Manage smarter.™, Dominion®, Power IQ® and PX™ are registered trademarks or trademarks of Raritan Inc. or its wholly-owned subsidiaries. All others are registered trademarks or trademarks of their respective owners.

Raritan is a leading provider of secure IT infrastructure management solutions that provide IT directors, managers and administrators the control they need to optimize data center productivity, enhance branch office operations and increase overall power management efficiency. In over 50,000 locations around the world, our integrated secure in-band and out-of-band server access, control and power management products help companies better monitor and manage server access, utilization and energy consumption. Raritan's OEM division provides advanced embedded hardware and firmware for server and client management, including KVM over IP, IPMI, intelligent power management and other industry standards-based management applications. Based in Somerset, NJ, Raritan has 38 offices worldwide, serving 76 countries. For more information, please visit Raritan.com