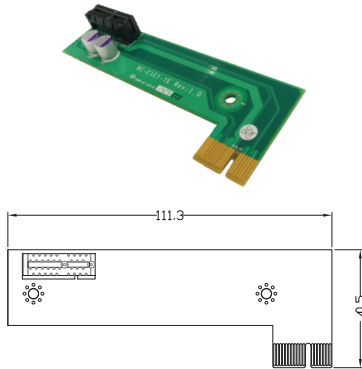


Riser Card

RC-E1-01

Riser Card with 1x PCIe1 Slot

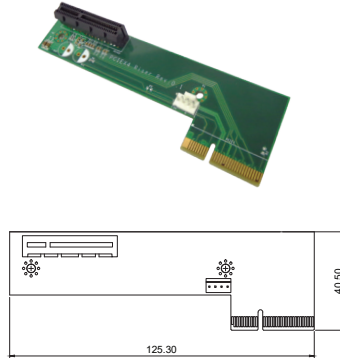
Interface: 1x PCIe1
Expansion: 1x PCIe1
Dimension: 111.3 x 40.5 mm



RC-E4-01

Riser Card with 1x PCIe4 Slot

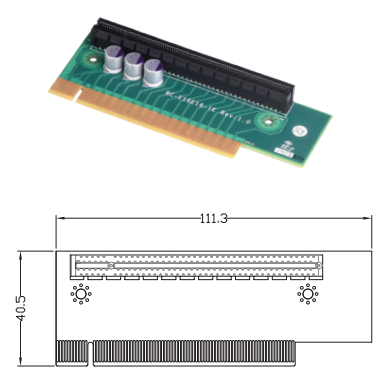
Interface: 1x PCIe4
Expansion: 1x PCIe4
Dimension: 125.3 x 40.5 mm



RC-E16-01

Riser Card with 1x PCIe16 Slot

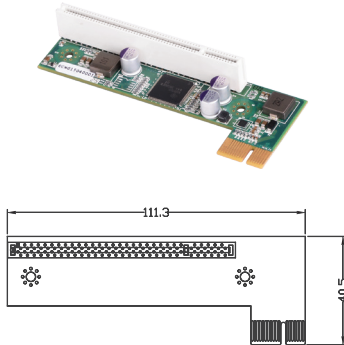
Interface: 1x PCIe16
Expansion: 1x PCIe16
Dimension: 111.3 x 40.5 mm



RC-PI-01

Riser Card with 1x PCI Slot

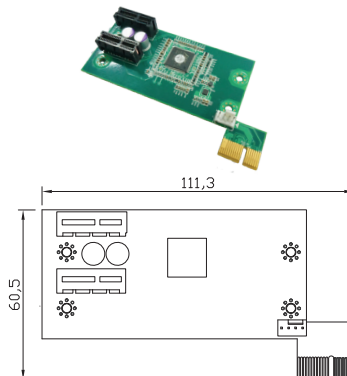
Interface: 1x PCIe1
Expansion: 1x PCI
Dimension: 111.3 x 40.5 mm



RC-E1E1-01

Riser Card with 2x PCIe1 Slots

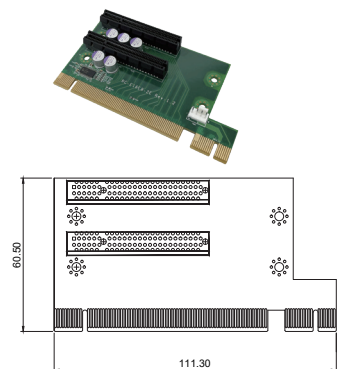
Interface: 1x PCIe1
Expansion: 2x PCIe1
Dimension: 111.3 x 60.5 mm



RC-E8E8-R10

Riser Card with 2x PCIe8 Slots

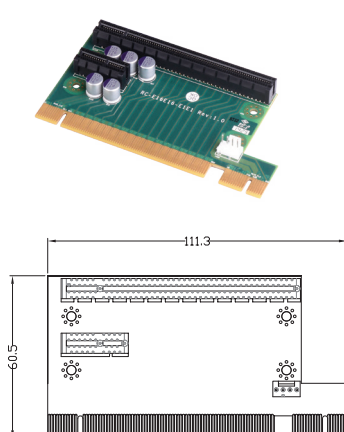
Interface: 1x PCIe16 + 1x PCIe1
Expansion: 2x PCIe8
Dimension: 111.3 x 60.5 mm



RC-E16E1-01

Riser Card with 1x PCIe16 and 1x PCIe1 Slots

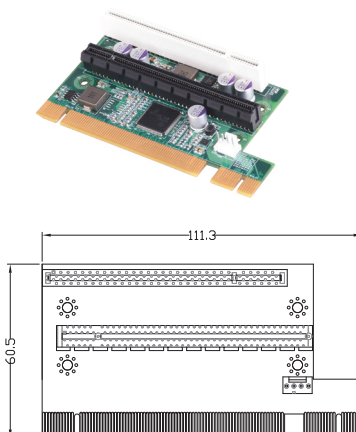
Interface: 1x PCIe16 + 1x PCIe1
Expansion: 1x PCIe16, 1x PCIe1
Dimension: 111.3 x 60.5 mm



RC-E16PI-01

Riser Card with 1x PCIe16 and 1x PCI Slots

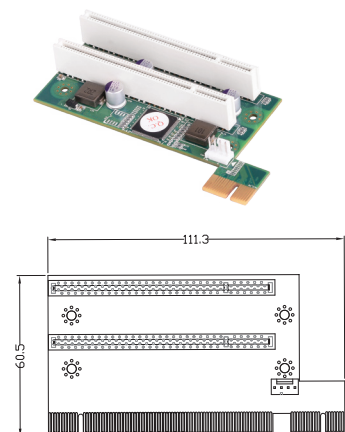
Interface: 1x PCIe16 + 1x PCIe1
Expansion: 1x PCIe16, 1x PCI
Dimension: 111.3 x 60.5 mm



RC-PIPI-01

Riser Card with 2x PCI Slots

Interface: 1x PCIe1
Expansion: 2x PCI
Dimension: 111.3 x 60.5 mm



- RC-PI-02

Riser Card with 1x PCI Slot

Interface: 1x PCIe4

Expansion: 1x PCI

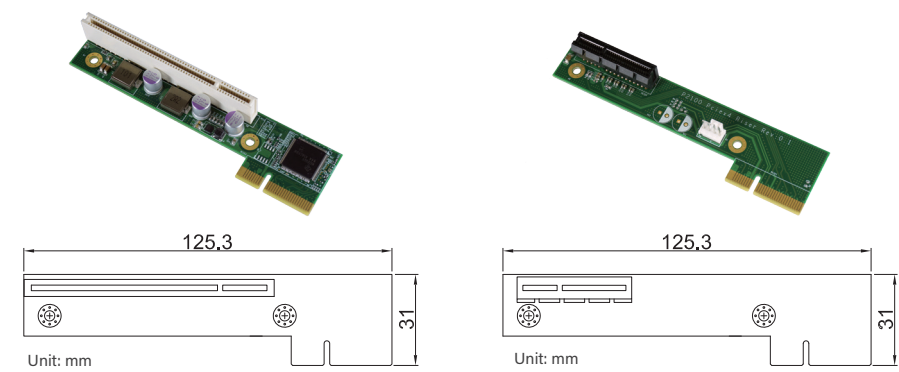
Dimension: 125.3 x 31 mm
- RC-E4-02

Riser Card with 1x PCIe4 Slot

Interface: 1x PCIe4

Expansion: 1x PCIe4

Dimension: 125.3 x 31 mm



Riser Card Compatible List

Model No.	RC-E1-01	RC-E4-01	RC-E16-01	RC-PI-01	RC-E1E1-01	RC-E8E8-R10	RC-E16E1-01	RC-E16P1-01	RC-PIPI-01	RC-P1-02	RC-E4-02
P2102E										V	V
P2002E		V		V							
DS-1302						V	V	V	V		
DS-1301			V	V							
DS-1202						V	V	V	V		
DS-1201			V	V							
DS-1102						V	V	V	V		
DS-1101			V	V							
DS-1002							V	V	V		
DS-1001			V	V							
DE-1002					V				V		
DE-1001	V			V							

V : Compatible

Ordering Information

Model No.	Description
RC-E1-01	Riser Card with 1x PCIe1 Slot
RC-E4-01	Riser Card with 1x PCIe4 Slot
RC-E16-01	Riser Card with 1x PCIe16 Slot
RC-PI-01	Riser Card with 1x PCI Slot
RC-E1E1-01	Riser Card with 2x PCIe1 Slots
RC-E8E8-R10	Riser Card with 2x PCIe8 Slots
RC-E16E1-01	Riser Card with 1x PCIe16 and 1x PCIe1 Slots
RC-E16PI-01	Riser Card with 1x PCIe16 and 1x PCI Slots
RC-PIPI-01	Riser Card with 2x PCI Slots
RC-PI-02	Riser Card with 1x PCI Slot for P2102E
RC-E4-02	Riser Card with 1x PCIe4 Slot for P2102E