

# Getac

Rugged Mobile Computing Solutions

## T800

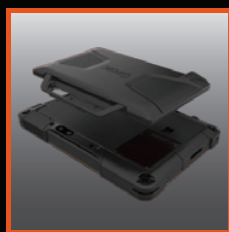
### Fully Rugged Tablet



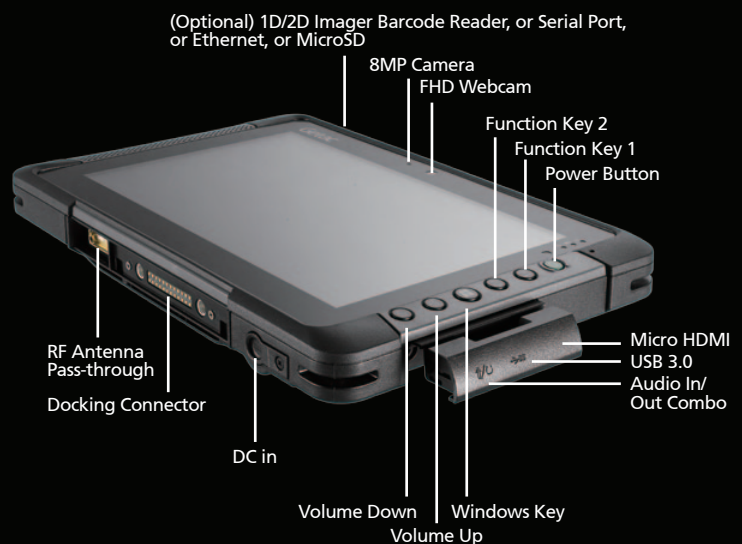
- 8.1" HD LumiBond® 2.0 display for better viewing experience
- Getac proprietary SnapBack add-on featuring Smart card and contactless RFID reader Combo or 2nd expanded battery
- Choice of 1D/2D imager barcode reader, Serial port, Micro SD or Ethernet
- Up to 10 hours of battery life with one charge. LifeSupport™ battery swappable technology for uninterrupted battery life
- Enhanced Enterprise Security with Windows Disk Encryption, TPM 2.0 and many more multi-factor authentication options



Vehicle Dock



SnapBack add-on





## Specifications

<b>Operating System</b>	Windows 10 Pro	<b>Communication Interface</b>	Optional 10/100/1000 base-T Ethernet (occupies expansion slot) Intel® Dual Band Wireless-AC 7265, 802.11ac Bluetooth (v4.0) Optional dedicated GPS Optional Gobi™ mobile broadband
<b>Mobile Computing Platform</b>	Intel® Atom Processor x7-Z8700 1.6 GHz, burst up to 2.40 GHz - 2MB Cache	<b>Software</b>	Getac Utility (including Power Manager) Getac Geolocation Getac Barcode Manager Adobe® Reader®
<b>VGA Controller</b>	Intel® HD Graphics	<b>Security Feature</b>	TPM 2.0 Optional SnapBack add-on: Smart card and contactless RFID/NFC reader combo <sup>iii</sup>
<b>Display</b>	8.1" TFT LCD HD (1280 x 800) 600 nits LumiBond® display with Getac sunlight readable technology	<b>Power</b>	AC adapter (65W, 100-240VAC, 50 / 60Hz) Li-Ion battery (7.4V, 4200mAh) <sup>iv</sup> LifeSupport™ battery swappable technology (only with SnapBack 2nd expanded battery)
<b>Storage &amp; Memory</b>	4GB LPDDR3 expandable to 8GB eMMC 64GB / 128GB	<b>Dimension (W x D x H) &amp; Weight</b>	227 x 151 x 24 mm (8.93" x 5.94" x 0.94") 0.88kg (1.94 lbs) <sup>v</sup>
<b>Keyboard</b>	6 tablet buttons (Windows, Power, Function Key, Camera Capture/ Barcode Reader Trigger, Volume Up, Volume Down)	<b>Rugged Feature</b>	MIL-STD-810G certified and IP65 certified 6 feet drop resistant Optional ANSI/ISA 12.12.01 Vibration & drop resistant e-Mark certified for vehicle usage
<b>Pointing Device</b>	Touchscreen - Capacitive multi-touch screen - Optional dual mode touchscreen (multi-touch and digitizer)	<b>Environmental Specification</b>	Temperature <sup>vi</sup> : - Operating: -21°C to 50°C / -5.8°F to 122°F - Storage: -40°C to 71°C / -40°F to 160°F Humidity: - 95% RH , non-condensing
<b>Expansion Slot</b>	Optional 1D/2D imager barcode reader, Serial port, MicroSD or Ethernet <sup>i</sup> Optional SnapBack add-on: Smart card and contactless RFID/NFC reader combo <sup>iii</sup> Optional SnapBack add-on: 2nd expanded battery <sup>ii</sup> Optional SnapBack add-on: Smart card and Magnetic Stripe reader <sup>ii</sup>	<b>Optional Accessories</b>	Carry bag Battery charger (Dual Bay) Main battery (7.4V, 4200mAh) Multi-Bay Charger (Eight Bay) 2nd expanded battery (14.4V, 2100 mAh) AC adapter (65W, 100-240VAC) Vehicle adapter (90W, 11-16V DC and 22-32V DC) Capacitive stylus & tether (Hard-tip) Digitizer pen Shoulder strap (2-point) Hand-strap Wrist-strap Protection film Vehicle cradle Vehicle dock Office dock
<b>I/O Interface</b>	FHD webcam x 1 8M pixels auto focus rear camera x 1 USB 3.0 (9-pin) x 1 Headphone out/Mic-in Combo x 1 DC in Jack x 1 Micro HDMI x 1 Docking connector (24-pin) x 1 Optional RF antenna pass-through for GPS, WWAN and WLAN		

### Docking Solutions

	Serial Port	External VGA	Microphone	Audio Output	DC in Jack	USB	LAN	HDMI	RF Antenna Connector (GPS, WWAN, WLAN)
Vehicle Dock	1	1	1	1	1	2	1	--	3 (optional)
Office Dock	--	1	1	1	1	4	1	1	--

<sup>i</sup> Barcode reader, Serial port, Ethernet, and MicroSD port are mutually exclusive options.

<sup>ii</sup> All SnapBack add-ons are mutually exclusive options.

<sup>iii</sup> 13.56MHz Contactless RFID/NFC reader (ISO 15693, 14443 A/B, Mifare and Felica™ compliant).

<sup>iv</sup> Battery life testing conducted under MobileMark 2007. Battery performance will vary upon software applications, wireless settings, power management settings, LCD brightness, customized modules and environmental conditions.

<sup>v</sup> The battery has a limited number of charge cycles and may eventually need to be replaced by a Getac service provider. Battery life and charge cycles vary by use and settings.

<sup>v</sup> Weight varies from configurations and optional accessories.

<sup>vi</sup> Tested by a national independent third party test lab following MIL-STD-810G.



### Getac Technology Corporation

5F, Building A, No. 209, Section 1, Nangang Rd., Nangang Dist., Taipei City, 11568, Taiwan, R.O.C.

Tel: +886 2 2785 7888

globalmarketing@getac.com

www.getac.com

