

Getac

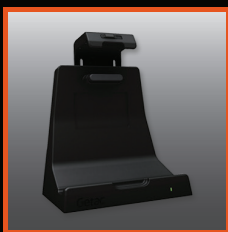
Rugged Mobile Computing Solutions

F110

Fully Rugged Tablet

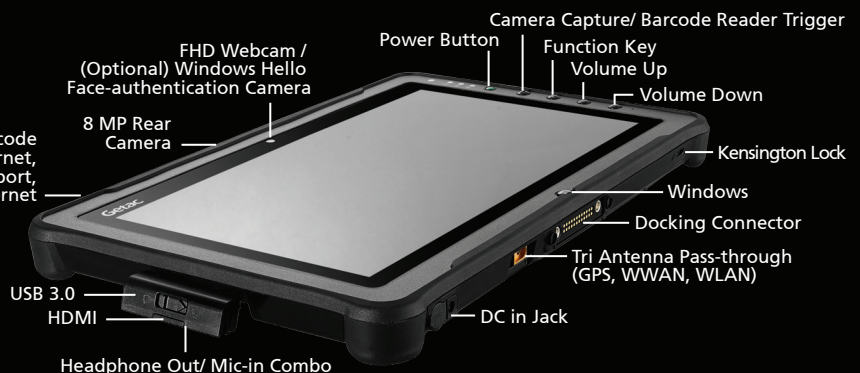


- Enhanced Enterprise Security with Optional Intel vPro, Windows Hello Face-authentication Camera, TPM 2.0 and Many More Multi-Factor Authentication Options
- 7th Generation Intel® Core™ i7/i5 Processor
- 11.6" LumiBond® 2.0 Display with Getac Sunlight Readable Technology and Capacitive Touchscreen
- 6 Configurable Options to Fit Diverse Data Collection Needs: Optional 1D/2D Imager Barcode Reader/Serial Port/Ethernet/MicroSD/2nd USB (USB 2.0) Port/Serial Port+Ethernet
- LifeSupport™ Battery Swappable Technology



Office Dock

(Optional) 1D/2D imager barcode reader, or Serial port, or Ethernet, or MicroSD, or USB 2.0 port, or Serial port+Ethernet





Specifications

Operating System	Windows 10 Professional	Communication Interface	Optional 10/100/1000 base-T Ethernet ⁱ (occupies expansion slot) Intel® Dual Band Wireless-AC 8265, 802.11ac Bluetooth (v4.2) ⁱⁱ Optional dedicated GPS Optional 4G LTE mobile broadband
Mobile Computing Platform	Platform Options: Intel® Core™ i7 Technology Intel® Core™ i7-7500U Processor 2.7GHz Max. 3.5GHz with Intel® Turbo Boost Technology - 4MB Intel® Smart Cache Intel® Core™ i7 vPro™ Technology Intel® Core™ i7-7600U vPro™ Processor 2.8GHz Max. 3.9GHz with Intel® Turbo Boost Technology - 4MB Intel® Smart Cache Intel® Core™ i5 Technology Intel® Core™ i5-7200U Processor 2.5GHz Max. 3.1GHz with Intel® Turbo Boost Technology - 3MB Intel® Smart Cache Intel® Core™ i5 vPro™ Technology Intel® Core™ i5-7300U vPro™ Processor 2.6GHz Max. 3.5GHz with Intel® Turbo Boost Technology - 3MB Intel® Smart Cache	Software	Getac Utility (including Power Manager) Getac Camera Getac Geolocation Getac Barcode Manager Adobe® Reader® Optional Absolute DDS® Persistence
VGA Controller	Intel® HD Graphics 620	Security Feature	Optional Intel® vPro™ Technology TPM 2.0 Optional LF/HF RFID ⁱⁱⁱ , ^{iv} Magnetic Stripe reader, Smart Card reader or Fingerprint Scanner or HDMI-In with Smart Card reader Kensington lock
Display	11.6" IPS TFT LCD HD (1366 x 768) 800 nits LumiBond® display with Getac sunlight readable technology Capacitive multi-touch screen	Power	AC adapter (65W, 100-240VAC, 50 / 60Hz) Li-Ion smart battery (11.4V, 2160mAh) x 2 (up to 12 hours of battery life) ^v LifeSupport™ battery swappable technology
Storage & Memory	4GB DDR4 expandable to 16GB OPAL 2.0 SSD 128GB / 256GB / 512GB	Dimension (W x D x H) & Weight	314 x 207 x 24.5 mm (12.4" x 8.15" x 0.96"), 1.39 kg (3.08 lbs) ^{vi}
Keyboard	6 tablet buttons (Windows, Power, Function Key, Camera Capture/ Barcode Reader Trigger, Volume Up, Volume Down)	Rugged Feature	MIL-STD-810G certified and IP65 certified MIL-STD-461G certified ^{vii} Optional ANSI/ISA 12.12.01 Vibration & drop resistant e-Mark certified for vehicle usage
Pointing Device	Touchscreen - Capacitive multi-touch screen - Optional dual mode touchscreen (multi-touch and digitizer)	Environmental Specification	Temperature ^{viii} : - Operating: -21°C to 60°C / -5.8°F to 140°F - Storage: -51°C to 71°C / -60°F to 160°F Humidity: - 95% RH , non-condensing
Expansion Slot	Optional 1D/2D imager barcode reader, or Serial port, or Ethernet, or MicroSD, or USB 2.0 port, or Serial port+Ethernet ⁱ	Optional Accessories	Carry bag Multi-Bay Charger (Dual Bay) Multi-Bay Charger (Eight Bay) Detachable folding keyboard Vehicle adapter (90W, 11-16VDC and 22-32VDC) MIL-STD-461G certified AC adapter (90W, 100-240VAC) Digitizer Pen Capacitive stylus (Hard-tip) Protection film Tablet folio case Hand Strap Shoulder harness (4-point; handsfree) Shoulder Strap (2-point) Battery (11.4V, 2160mAh) AC adapter (65W, 100-240VAC) Vehicle cradle Vehicle dock Office dock Office dock with twin battery charger
I/O Interface	FHD webcam x 1 or Optional Windows Hello face-authentication camera (front-facing) x 1 8M pixels auto focus rear camera x 1 Headphone out / mic-in combo x 1 DC in Jack x 1 USB 3.0 (9-pin) x 1 Docking connector (24-pin) x 1 HDMI x 1 Optional RF antenna pass-through for GPS, WLAN and WWAN		

Docking Solutions

	Serial Port	External VGA	Microphone	Audio Output	DC in Jack	USB	LAN	HDMI	RF Antenna Connector (GPS, WWAN, WLAN)
Vehicle Dock	2	1	1	1	1	4	1	1	3
Office Dock	2	1	1	1	1	4	1	1	--

ⁱ Barcode reader, Serial port, Ethernet, MicroSD, 2nd USB (USB 2.0) port, or Serial port+Ethernet are mutually exclusive options.

ⁱⁱ Bluetooth performance and connectable distance may be subject to interference with the environments and performance on client devices, users may be able to reduce effects of interference by minimizing the number of active Bluetooth wireless devices that is operating in the area.

ⁱⁱⁱ LF/HF RFID, Magnetic Stripe reader, Smart Card reader, Fingerprint Scanner and HDMI-In with Smart Card reader are mutually exclusive options.

^{iv} LF(125kHz) / HF(13.56MHz) Combo RFID/NFC reader (iClass, HID Prox, ISO 15693, 14443 A/B, Mifare and Felica™-compliant).

^v Battery life testing conducted under MobileMark 2014. Battery performance will vary upon software applications, wireless settings, power management settings, LCD brightness, customized modules and environmental conditions.

^{vi} The battery has a limited number of charge cycles and may eventually need to be replaced by a Getac service provider. Battery life and charge cycles vary by use and settings.

^{vii} Weight and dimensions vary from configurations and optional accessories.

^{viii} MIL-STD-461G 90W AC adapter sold separately.

^{viii} Tested by a national independent third party test lab following MIL-STD-810G.

Getac

Getac Technology Corporation

5F, Building A, No. 209, Section 1, Nangang Rd., Nangang Dist.,
Taipei City, 11568, Taiwan, R.O.C.

Tel: +886 2 2785 7888

globalmarketing@getac.com

www.getac.com

