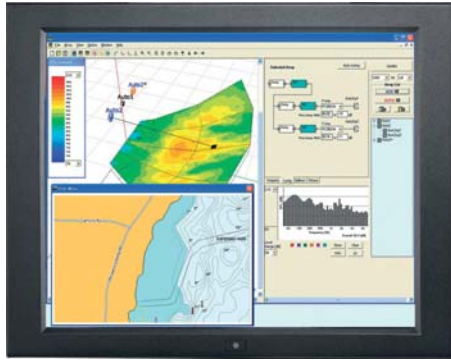


AP-17 6mm aluminum front bezel



Display Benefits

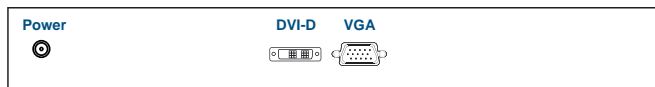
- ▶ 17" LCD with resolution 1280 x 1024
- ▶ Rugged construction against external impact
- ▶ Protective 3mm glass

Options

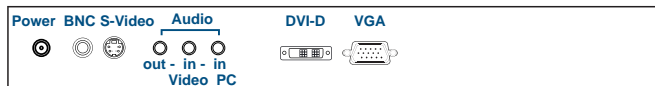
- MCS Multi-display control solution
- Projected Capacitive (4-point touch)
Resistive / Capacitive (single point touch)
- S-Video + Composite (BNC) or Audio input
- HDMI or DVI-D (either one for AV2.2 upgrade)
- MIL-type or lockable connector
- DC power : 12V / 24V / 48V / 110 ~ 125V
- Quad display for CCTV
- TV - Analog



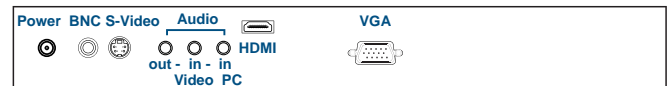
Basic I/O



AV2.2D upgrade I/O



AV2.2H upgrade I/O



Specifications

• LCD Panel

Manufacturer :	AUO
Size (diagonal) :	17" TFT
Max resolution :	1280 x 1024
Brightness (cd/m2) :	250
Backlight :	CCFL
Colors :	16.7 M
Contrast ratio (typ) :	1000 : 1
Viewing angle (H/V) :	160° x 160°
Active area (mm) :	338 x 270
MTBF (hrs) :	50,000
Signal input :	VGA or DVI-D

• Weight

Net / Gross : 6.6 kgs (14.5 lbs) / 9.2 kgs (20.2 lbs)

• Mounting :

Panel mount / VESA mount

• Environmental

Operating :	0 to 50°C Degree
Storage :	-5 to 60°C Degree
Relative humidity :	5~90%, non-condensing
Shock :	10G acceleration (11 ms duration)
Vibration :	5~500Hz 1G RMS random vibration

• Casing Color :

Black (RAL 9005)

• Regulatory

Safety :	FCC & CE certified
Environmental :	RoHS2 & REACH compliant

• Power

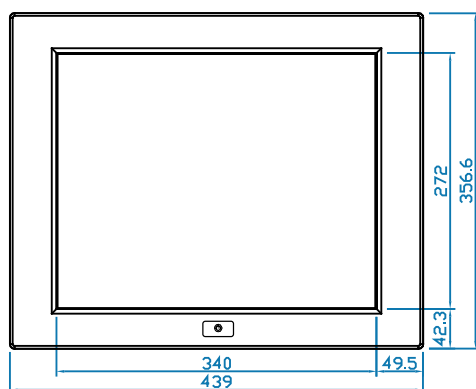
Input :	Auto-sensing 100 to 240VAC, 50 / 60Hz
Consumption :	Max. 48 Watt, Standby 5 Watt

• Dimensions

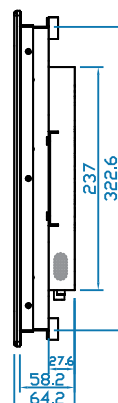
Product :	439 x 64.2 x 356.6 mm / 17.3 x 2.5 x 14 inch
Packing :	615 x 113 x 523 mm / 24.2 x 4.4 x 20.6 inch

Diagrams (mm)

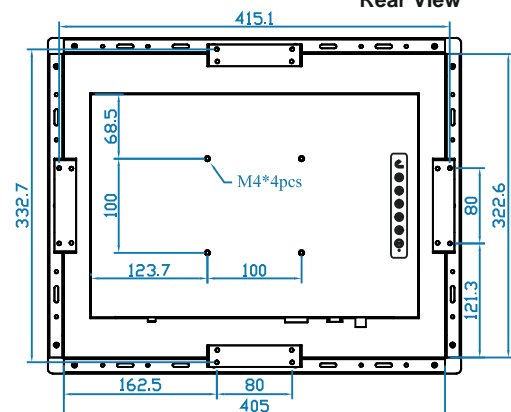
Front View



Side View



Rear View



**Dimension will be changed if Multi-touch required