

# DRPC-240-TGL-U

## Features

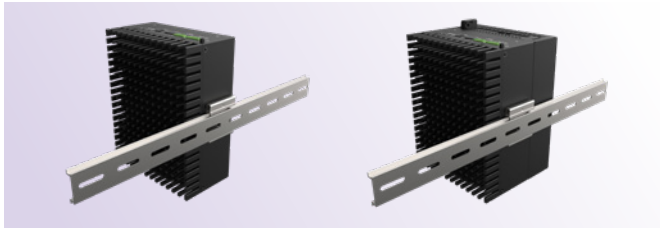
- Supported CPUs:
  - Intel® Celeron® 6305 1.8GHz (dual-core, 15W TDP)
  - Intel® Core™ i5-1145G7E 1.5GHz (up to 4.1GHz, quad-core, 15W TDP)
  - Intel® Core™ i7-1185G7E 1.8GHz (up to 4.4GHz, quad-core, 15W TDP)
- 4 x 2.5GbE ports, supporting PoE
- Two RS-232 & two RS-422/485 (with 2.5kV isolation)
- CE/FCC compliant



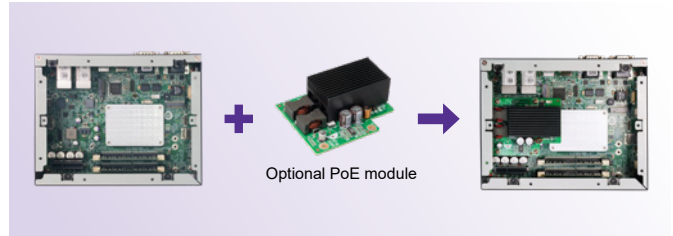
## Specifications

Model Name		DRPC-W-JL-NC-R10	DRPC-240-TGL-U-i7CS-R10	DRPC-240-TGL-U-CCS-R10
Chassis	Color	Black		
	Dimensions (WxDxH) (mm)	81 x 150 x 190		
	System Fan	Fanless		
	Chassis Construction	Extruded aluminum alloys		
Motherboard	CPU	Intel® Core™ i5-1145G7E 1.5 GHz (up to 4.1 GHz, quad-core, TDP 15W)	Intel® Core™ i7-1185GRE (1.8 GHz, quad-core, 15W, 12MB L3)	Intel® Celeron® 6305 1.8 GHz (dual-core, TDP 15W)
	Chipset	SoC		
	BIOS	BIOS		
	Memory	2 x SO-DIMM DDR4 3200 MHz (8 GB pre-installed) Support in-band ECC		
Storage	HDD Bay	1 x 2.5" SATA 6Gb/s HDD/SSD bay		
I/O Interfaces	USB	2 x USB 3.2 Gen2 2 x USB 2.0		
	Ethernet	4 x RJ45: 1 x 2.5GbE by Intel® I225LM 3 x 2.5GbE by Intel® I225V (colay I225LM) *All four ports support/reserve TSN/TCC function; support optional PoE af module		
	Port	2 x RS422/485 with AFC (DB-9, with 2.5kV isolation) 2 x RS232 (DB-9, with 2.5kV isolation)		
	Digital I/O	12-bit Digital I/O (6-in/ 6-out)		
	Display	1 x HDMI (up to 3840 x 2160@30Hz) 1 x DP++ (up to 4096 x 2304@60Hz)		
	Wireless	1 x 802.11a/b/g/n/ac (optional)		
	TPM	Support Intel PTT		
	Others	1 x Power button, 1 x Reset button, 1 x AT/ATX switch, 1 x Power LED (green), 1 x HDD LED (yellow), 4-pin external system fan connector		
Expansions	M.2	1 x 2230 A-key (PCIe x1/USB 2.0) 1 x 3042/52/80 B-key (PCIe x2/USB 3.0/USB 2.0)		
	Backplane	1 x PCIe Gen3 x4		
Power	Power Input	Terminal block: 12 ~ 28V DC		
	Power Consumption	TBD		
Reliability	Mounting	DIN-Rail		
	Operating Temperature	-20°C ~ 60°C with air flow (SSD), 10% ~ 95% non-condensing		
	Storage Temperature	-40°C ~ 85°C, 10% ~ 95% non-condensing		
	Operating Shock	Half-sine wave shock 5G, 11ms, 100 shocks per axis (SSD)		
	Operating Vibration	MIL-STD-810G 514.6C-1 (SSD)		
	Weight (Net/Gross)	TBD		
	Safety/EMC	CE/ FCC		
	Watchdog Timer	Programmable 1 ~ 255 sec/min		
OS	Supported OS	Microsoft® Windows 10, Linux		

### Support DIN-rail Mount



### Optional PoE Module



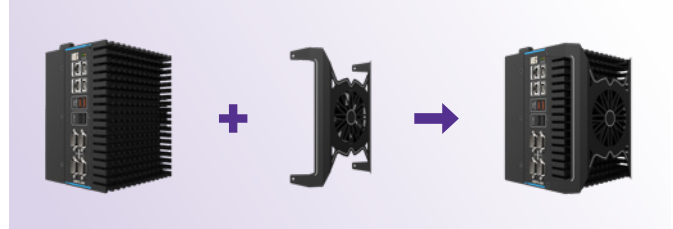
### Support Chassis Expansion

The expansion chassis provides one PCIe x4 slot for IEC Mustang accelerator card.



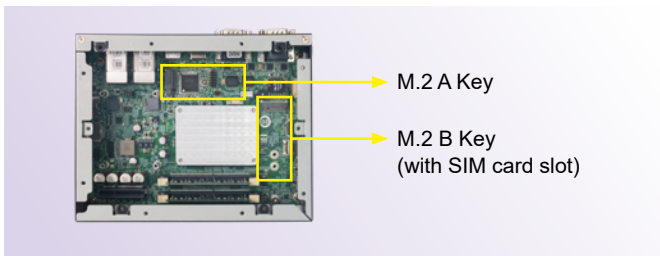
### External Fan

Installing an external fan helps to increase system performance in harsh environment.



### Internal M.2 Expansion

The system motherboard has one M.2 A key slot and one M.2 B key slot. The A key slot supports Wi-Fi or Bluetooth expansion; the B key slot (with SIM card holder) can support 4G modules or accelerator cards.



### Built-in 11<sup>th</sup> Gen Intel® CPU

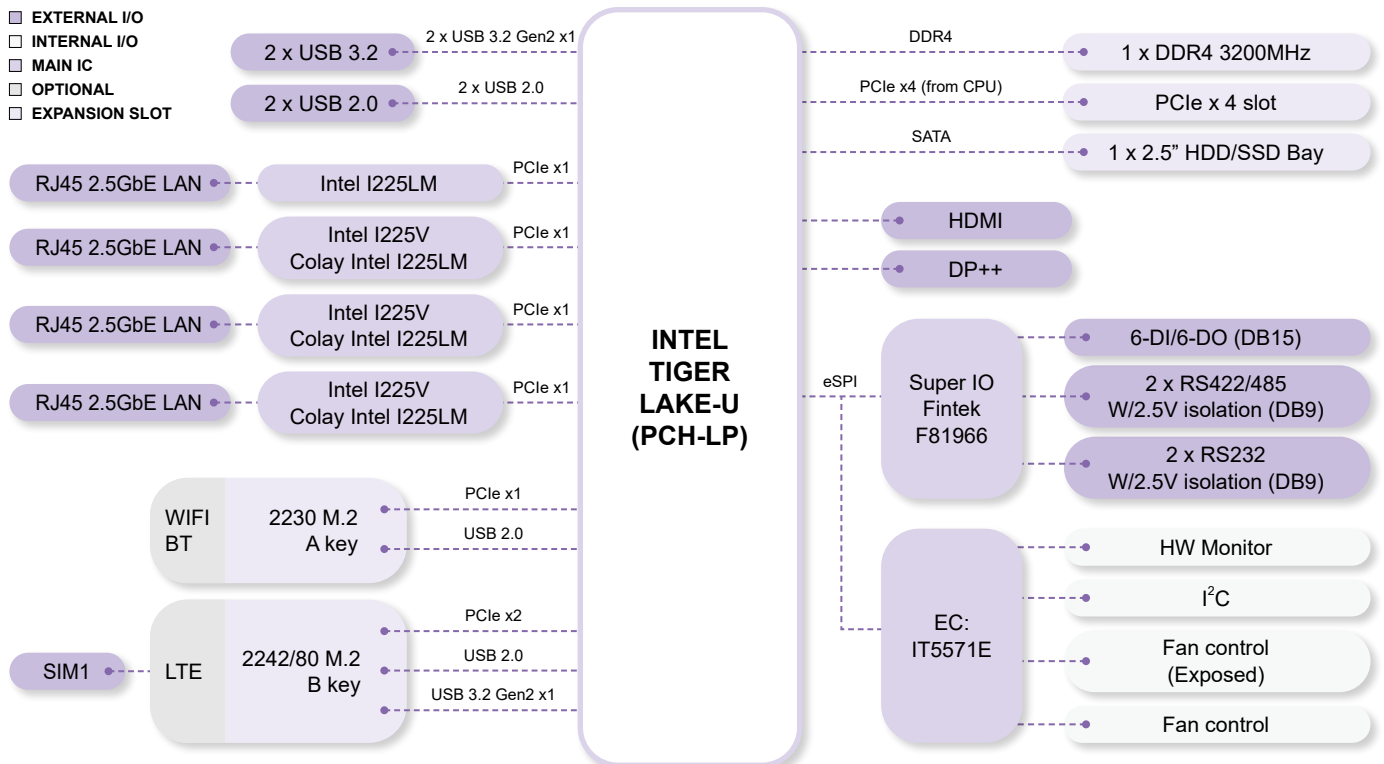
It is powered by 11<sup>th</sup> Gen Intel® Core™ i7/i5 or Celeron® processor (FCBGA 1449) to unleash optimal performance and multitasking capability.

### Built-in Intel® I225-LM (V) 2.5GbE Controllers

Four RJ45 Ethernet ports on the I/O panel through Intel® I225-V GbE controllers provide up to 2.5G network transmission rate, and support optional PoE modules.

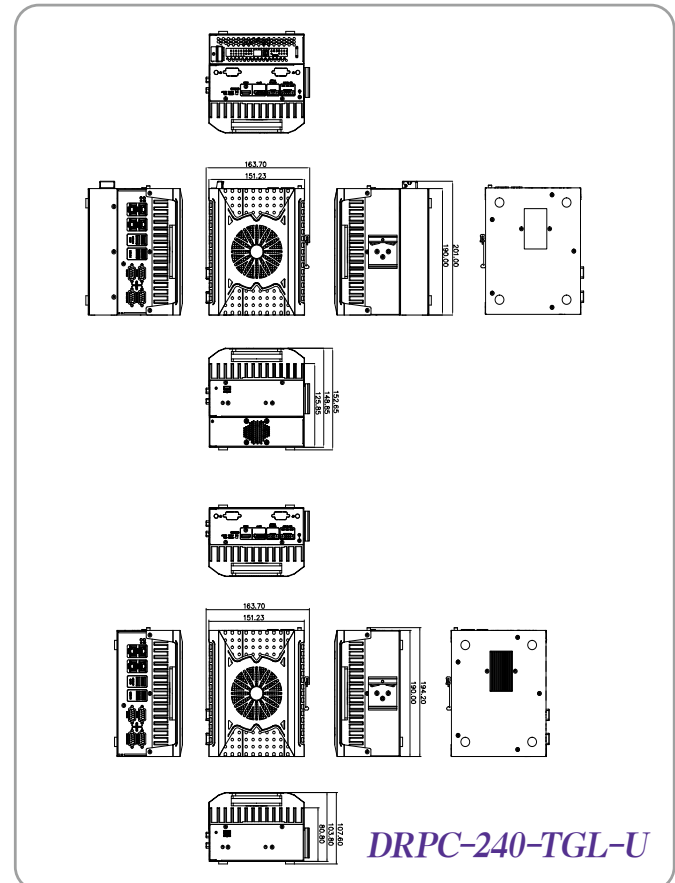
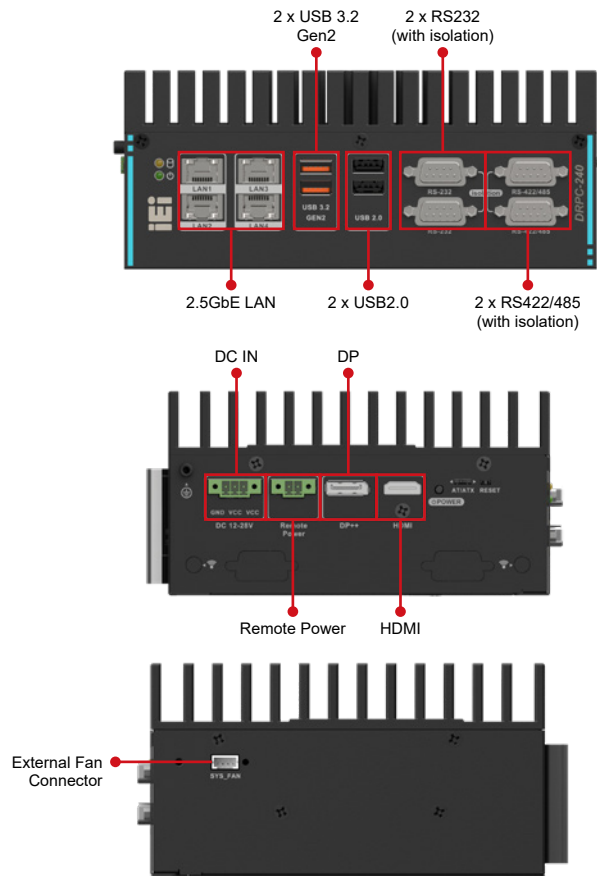
### USB 3.2 Gen 2 Ports, up to 10Gb/s

### DRPC-W-JL Block Diagram



Fully Integrated I/O

Dimensions (Unit: mm)



Ordering Information

Part No.	Description
DRPC-240-TGL-U-i5CS-R10	Fanless embedded system, Intel® Tiger Lake-U i5-1145G7E 1.5GHz (quad core, TDP 15W), 8GB DDR4 pre-installed memory, HDMI/DP++, 4 x 2.5GbE LAN, 4 x COM, DIO, 12~28V DC and RoHS
DRPC-240-TGL-U-CCS-R10	Fanless embedded system, Intel® Tiger Lake-U Celeron™6305 1.8GHz (dual core, TDP 15W), 8GB DDR4 pre-installed memory, HDMI/DP++, 4 x 2.5GbE LAN, 4 x COM, DIO, 12~28V DC and RoHS
DRPC-240-TGL-U-i7CS-R10	Fanless embedded system, Intel® Tiger Lake-U i7-1185G7E 1.8GHz (quad core, TDP 15W), 8GB DDR4 pre-installed memory, HDMI/DP++, 4 x 2.5GbE LAN, 4 x COM, DIO, 12~28V DC and RoHS

Options

Part No.	Description
TBD	PoE module
32031-000600-100-RS	ROUND CABLE;DIO CABLE;;2;150mm;28AWG;300V;(A)D-SUB 15P MALE;(B)DU PONT 2*7P P=2.0 FEMALE;Wins Precision;C24210815-0;RoHS
32205-003800-300-RS	FLAT CABLE;RS-232/422/485;RS-422/485 CABLE;;2;200MM;28AWG;(A)D-SUB 9PIN MALE;(B)JST PHR-4 P=2.0;ONE PCS PKG W/ LABEL;Wins Precision;RoHS
32702-000400-200-RS	POWER CORD;EUROPEAN CODE(VDE);2;1800MM;;(A)PLUG:SH-025(16A/250V);(B)CONNECTOR:C5(SM112, 2.5A/250V);Self-Man;CCL;RoHS
41019-2312C2-00-HF	HOLDER;FAN FILTER BRACKET;NCT processing formation;DRPC-240-ULT6;PAINTING;PMS Black C;41019-2312XX;;NCT(N);SECC;VER:00;CCL;Halogen Free
32102-054800-100-RS	WIRE CABLE;POWER CABLE;;2;200mm;18AWG;300V;(A)POWER DIN 4P FEMALE;(B)TERMINAL BLOCK-3P P=3.5;Wins Precision;C24210816-0;RoHS
63040-010220-100-RS	Adapter Power;FSP;FSP220-ABAN2;9NA2200401;Active PFC;Vin:90~264VAC;220W;Cable=1500mm;Erp(NO LOAD 0.5W);Vout:19VDC;Din 4Pin;CCL;RoHS
63040-010120-300-RS2	Adapter Power;FSP;FSP120-AHAN3;9NA1206708;Active PFC;Vin:90~264VAC;120W;Dim:75.6*151.3*25.4mm;Plug=6.5mm; Cable=1500mm;Erp(NO LOAD 0.15W);Vout:12VDC;Din 4Pin/lock;CCL;RoHS
Mustang-V100-MX8-R113	Computing Accelerator Card with 8 x Movidius Myriad X MA2485 VPU, PCIe gen2 x4 interface, RoHS

<sup>1</sup> For the PoE module, it is suggested to use a 180W (or above) power adapter (63040-010220-100-RS 220W is recommended), and the PoE module can only be used in the single-layer model.

<sup>2</sup> The power adapter must be used with the 32102-054800-100-RS power cable.

<sup>3</sup> For IEI Mustang accelerator card, it is suggested to use a 180W (or above) power adapter (63040-010220-100-RS 220W is recommended), and the Mustang can only be used in the dual-layer model.

Packing List

1 x DIN-Rail mounting kit	1 x Screw pack	1 x Terminal block
---------------------------	----------------	--------------------